

17.

Comparative Biology of Salticid Spiders at Rancho Grande, Venezuela. Part IV. An Analysis of Display.¹

JOCELYN CRANE.

Research Zoologist, Department of Tropical Research,
New York Zoological Society.

(Plate I; Text-figures 1-9).

[This is one of a series of papers resulting from the 45th, 46th and 47th Expeditions of the Department of Tropical Research of the New York Zoological Society, made during 1945, 1946 and 1948 under the direction of Dr. William Beebe, with headquarters at Rancho Grande in the National Park of Aragua, Venezuela. The expeditions were made possible through the generous cooperation of the National Government of Venezuela and of the Creole Petroleum Corporation.]

[The characteristics of the research area are in brief as follows: Rancho Grande is located in north-central Venezuela (10° 21' N. Lat., 67° 41' W. Long.), 80 kilometers west of Caracas, at an elevation of 1,100 meters in the undisturbed montane rain forest which covers this part of the Caribbean range of the Andes. Adjacent ecological zones include seasonal forest, savanna, thorn woodland, cactus scrub, the fresh-water lake of Valencia and various marine littoral zones. The Rancho Grande area is generally subtropical, being uniformly cool and damp throughout the year because of the prevalence of the mountain cloud cap. The dry season extends from January into April. The average humidity during the expeditions, including parts of both dry and wet seasons, was 92.4%; the average temperature during the same period was 18° C.; the average annual rainfall over a five-year period was 174 cm. The flora is marked by an abundance of mosses, ferns and epiphytes of many kinds, as well as a few gigantic trees. For further details, see Beebe and Crane, *Zoologica*, Vol. 32, No. 5, 1947. Unless otherwise stated, the specimens discussed in the present paper were taken in the montane cloud forest zone, within a radius of one kilometer of Rancho Grande.]

CONTENTS.

I. Introduction	Page 159
II. Purpose	160
III. Materials and Methods	160
IV. Survey of Salticid Display.....	161
A. Form and Variety	161
B. Historical Review	170
C. Bases for Disagreements	172
D. Prognosis of Evolutionary Pattern	173
V. Factors in Display.....	175
A. Factors of the Internal Releasing Mechanism	175
1. Age	175
2. Fluctuating Epigamic Rhythm	176

3. Hunger and Thirst	179
4. Fatigue and Overstimulation	180
5. Attention	180
B. Factors of the External Releasing and Directing Mechanisms	180
1. Physical Environment	180
2. Sensory Elements and Sign Stimuli	181
a. Tactile Perceptions	181
b. Chemoperception	181
i. Chemotaxis	181
ii. Distance Chemoperception	182
c. Vision	184
i. Vision as a Primary Stimulus.....	184
ii. Motion	185
iii. Distance	187
iv. Size	189
v. Form	190
vi. Pattern, Intensity and Color.....	192
VI. Innate Releasing and Directive Mechanisms.....	199
A. Courtship	199
B. Threat Display	200
C. Comparison and Comment	200
VII. Behavior Related to Display.....	202
A. Displacement or Substitute Behavior	202
B. Dominance	202
C. Sociality	202
D. Territory	203
VIII. Functions of Display	203
A. Courtship	203
B. Threat	204
IX. Evolutionary Aspects of Display.....	205
A. Hypothetical Phylogeny	205
B. Origins of Display Motions	206
C. Relation of Secondary Sexual Characters to Display	208
D. Sexual Dimorphism and Display	209
E. Climate and Display	209
F. Displays as Specific Barriers.....	210
X. Summary	211
XI. References	213

I. INTRODUCTION.

This is the fourth of a series of papers dealing with the salticid spiders of Rancho Grande, Venezuela. Part I (Crane, 1948.1) discussed the taxonomy and life histories of three species of *Corythalia*, Part II (1948.2) described methods of study and Part III (1949) dealt with systematics and behavior in eight new species of various groups of genera, as a basis for this and subsequent sections. The present paper on display, while an independent unit, will be followed by sections on comparative post-embryological development and on evolutionary trends, which must, to some extent, be anticipated in the present paper.

My deep appreciation goes to Dr. William Beebe for his continued advice, encouragement and patience during the progress of this study. Special thanks are due Miss

¹ Contribution No. 858, Department of Tropical Research, New York Zoological Society.

This paper was awarded Honorable Mention in the A. Cressy Morrison Prize Competition of the New York Academy of Sciences for 1949.

Louise A. Moore and Mr. Douglas G. Boyden for their work on the drawings and diagrams, respectively.

II. PURPOSE.

The purpose of this paper is two-fold: first, to analyze the innate releasing mechanism of display behavior in salticids; second, through a comparison of display and related behavior in widely scattered genera, to shed light on evolutionary trends within the family.

III. MATERIAL AND METHODS.

The observational and experimental material in this paper has been drawn primarily from about fifteen species of salticid spiders which are common around Rancho Grande, Venezuela. They were carefully selected from among some thirty-five species in the same locality, in which display behavior was to some degree observed, on the following bases:

1. They represent a wide divergence of salticid forms, belonging to seven relatively well-defined groups of genera. These groups, although they have so far defied satisfactory divisions in keys to include all their borderline genera, are still rather generally recognized as composed of naturally related forms. For convenience, Petrunkevitch's (1928, 1939) practice of terming the groups "subfamilies" is followed, although their unequal values and the usual difficulties of salticid systematics are fully recognized. Since the tracing of a pattern of relationships is one of the purposes of this paper, groupings must be attempted. The genera chosen are relatively non-controversial, as are, in their broad outlines, the subfamilies to which they are referred; borderline cases have purposely been omitted. The selected forms are fairly typical members of the following subfamilies designated by Petrunkevitch: Marpissinae, Synagelinae, Dendryphantinae, Magoninae, Hyllinae and Plexippinae. The *Lyssomanes* group, however, in spite of its aberrant characters will be given only subfamilial status. These terms will be used throughout, in order to simplify correlation by future workers, in spite of questionable validity or priority in any of the old, type genera. Each subfamily corresponds to a group in Chickering's 1946 arrangement, based on Panamanian genera, except that in the present paper the plexippinids and hyllinids will be kept separate, largely in deference to basic behavior differences. From these limitations, it will be seen that the study cannot be expected to help in practical fashion in the determination of fine points of relationship among puzzling genera; rather, it is hoped only to clarify some of the broad outlines of the family's organization.

2. The second criterion of selection has been that each subfamily have a northern as well as neotropical distribution. This has

a double advantage, since some comparable display behavior has in each case been already recorded and future comparisons will be facilitated.

3. In three genera, *Sassacus*, *Phiale* and *Corythalia*, intrageneric behavior patterns could be compared.

The thirteen species listed in Table I form the paper's foundation, in the sense that most of the observations and experiments were performed on them. Ten of them were described as new in Parts I and III of this study (1948.1, 1949); the remaining three are well known in the tropics. For further comparison, a few casual references will be made to the following Rancho Grande species which are systematically undetermined: Magoninae: *Hypaeus* sp., Dep't. of Tropical Research Cat. No. 45138; Hyllinae: *Phiale* sp., Cat. No. 481408; Plexippinae: *Eustiromastix* sp., Cat. No. 45110; Plexippinae: a genus, probably new, near *Capidava*, Cat. No. 4586.

In Table II an effort has been made to correlate the relevant observations made upon northern species of the same subfamilies by previous investigators. Complete spider display references to 1939 are given in Bonnet's bibliography (1945, p. 718). Kaston (1936) and Bristowe (1941) give excellent selected references on the subject.

The general methods of observation and experiment at Rancho Grande have already been recorded (Part II, 1948.2). Special information regarding particular experiments will be presented in the body of this paper. See also Pl. I, Fig. 2.

It remains to remark on the usage of several terms. The phrase "epigamic display" has been advocated by a number of behaviorists to replace "courtship," a word which has an undesirable historical burden of anthropomorphism. In the study of salticids, the choice is complicated by the wide range of distinctness of male-female, female-male and inter-male display; a general term seems necessary to cover the entire field. Again, "aposematic display" has been proposed to designate inter-male encounters; in the literature, however, this term is used so widely to cover displays against potential predators—a type of display which is not known to occur in salticids—that a more restricted name appears desirable. Therefore, for present purposes, the following terminology has been adopted: *Epigamic display* refers to special behavior of either sex which is normally used in any sexual situation, including encounters between males. *Courtship* applies to those forms of epigamic display which normally precede copulation. *Threat display* is used for all inter-male display, whether or not it is visually distinct from courtship, and whether or not occasional contact fighting occurs.

"Ornamentation" is used as a convenient term to cover special colors, patterns, tufts, brushes, etc., which, conspicuous to human eyes, are specializations possibly connected

TABLE I.

Subfamily acc. to Petrunkévitch (1939)	Group acc. to Chickering (1946)	Name
Lyssomaninae	Lyssomaninae	<i>Lyssomanes bradyspilus</i> Crane, 1949
Marpissinae	<i>Marpissa</i> Group	<i>Menemerus bivittatus</i> (Dufour, 1831)
Synagelinae	<i>Zuniga</i> Group	<i>Semorina brachychelyne</i> Crane, 1949
Dendryphantinae	<i>Metaphidippus</i> Group	<i>Ashtabula furcillata</i> Crane, 1949
Dendryphantinae	<i>Metaphidippus</i> Group	<i>Sassacus flavicinctus</i> Crane, 1949
Dendryphantinae	<i>Metaphidippus</i> Group	<i>Sassacus ocellatus</i> Crane, 1949
Magoninae	<i>Amycus</i> Group	<i>Mago denticheles</i> Crane, 1949
Hyllinae	<i>Phiale</i> Group	<i>Phiale dybowskii</i> (Taczanowski, 1871)
Hyllinae	<i>Phiale</i> Group	<i>Phiale flammea</i> Crane, 1949
Plexippinae	<i>Phiale</i> Group	<i>Plexippus paykullii</i> (Audouin, 1827)
Plexippinae	<i>Phiale</i> Group	<i>Corythalia chalcona</i> Crane, 1948.1
Plexippinae	<i>Phiale</i> Group	<i>Corythalia fulgipedia</i> Crane, 1948.1
Plexippinae	<i>Phiale</i> Group	<i>Corythalia xanthopa</i> Crane, 1948.1

with epigamic displays. It and similar words are put in quotation marks when it seems wise to emphasize their non-anthropomorphic use. The quotations will simultaneously act as reminders, as advocated by Korzybski (1948), of the every-day, inexact connotations of the terms; another of his safety devices, the frequent use of *etc.*, is employed, not to disguise ignorance, but to emphasize the incomplete state of our knowledge.

The terms *sign stimulus*, *releaser*, *director*, *innate releasing mechanism*, *stimulus configuration* and *heterogeneous summation* are used with the meanings attached to them in Tinbergen's general discussion, in English, of social releasers (1948).

Throughout the present paper, the terms *reaction* and *response* are used interchangeably to indicate overt display behavior discernible to the human observer.

Kaston's (1948) nomenclature is followed in all references to species of salticids occurring in the United States.

IV. SURVEY OF SALTICID DISPLAY.

A. FORM AND VARIETY.

The general habits and life histories of all salticids are similar and typical of many hunting spiders; they spin no snares, but stalk and leap upon their prey, which they eat promptly; the male copulates in the dorsal position; the female guards the egg cocoon until the emergence of the spiderlings. In the development of their eyes, however, salticids are unique even among long-sighted hunting spiders. In company with the latter, notably the lycosids, and correlated with the acute vision, the salticids have evolved a courtship display which is primarily visual. This is in contrast to the behavior of short-sighted forms, such as the web-spinning epeirids, in which courtship depends on senses other than vision.

As in all groups, there is considerable intra-family variation in details of behavior, particularly in the form and care of the cocoons, in jumping methods, in preferred ecological niches and in physiological tolerances of various kinds. A most

important series of differences is based upon an apparently unreported correlation between visual acuity and chemical dependence on the one hand, and method of locomotion on the other. Because of its basic connection with display behavior, this subject will be considered in detail further on (p. 173).

The outstanding directions of development within the family are shown in the very remarkable variety of epigamic display patterns and in the apparently correlated ornamentation of the spiders. All salticids, before inserting the sperm-charged palps into the epigynum of the female, perform some sort of preliminary motions, the form of which, under natural conditions, is a fixed part of the behavior pattern for the species. These movements range from brief and simple elevations of the first legs to complicated and prolonged sequences involving most of the other appendages.

In some salticids there are clear visual distinctions between courtship and intermale threat display, which often employ not only distinctive motions but also different appendages. In each kind of epigamic display, when complete, there are always distinguishable two major stages. Specific display differences, as well as distinctions between courtship and threat, always lie principally in Stage I. Stage II, which immediately precedes either copulation or true fighting as the case may be, is very similar throughout the family; it consists in extending the first legs forward, parallel to each other and slightly elevated. (Pl. I, Fig. 1).

Although salticid display is dominantly visual, the role of other senses is proving of considerable secondary importance. Unfortunately, because of the limitations of human sense organs and the lack of appropriate instruments, specific display descriptions must still be largely confined to the reporting of gross visual components. For instance, possible changes in chemical stimuli, which may be emitted in sequence during display, are still necessarily overlooked.

Table II presents correlated data on the displays recorded within the subfamilies

TABLE II.
Comparative Display Data in Seven Subfamilies of Salticid Spiders.

Name	Display References	Courtship Posture (Stage I)
MARFISSINAE		
<i>Marpissa undata</i> (De Geer)	Peckham, '89, p. 43; fig. ("Marpissa familiaris") (U.S.A.)	Carapace high. 1st & 2nd legs raised slightly, stretched laterally. Abdomen pendent.
<i>Marpissa rumpfi</i> Scop.	Bristowe, '29, p. 330-352. Bristowe, '41, p. 480; fig. (England)	Carapace high. 1st legs raised vertically, parallel. Abdomen raised.
<i>Menemerus bivittatus</i> (Dufour)	Crane (Unpublished observations) (Venezuela)	Carapace low. 1st legs raised slightly, stretched antero-laterally; 2nd legs ex- tended forward. Abdomen level.
<i>Hytia nivoyi</i> Luc.	Berland, '27, p. 15; fig. Bristowe, '29, p. 329; fig. Bristowe, '41, p. 484; fig. (Europe)	1st legs stretched forward @ \angle of 45°; raised & lowered. Abdomen often bent sideways. (cf. Dendryphantinae).
<i>Hytia pikei</i> Peckham	Kaston, '48, p. 455; fig. (U.S.A.)	Carapace low. 1st legs raised vertically @ \angle of 45°. 2nd legs extended forward. Abdomen raised.
<i>Salticus cingulatus</i> Panz.	Bristowe, '29, p. 332. (England)	Similar to <i>S. scenicus</i> .
<i>Salticus scenicus</i> (Linn.)	Peckham, '89, p. 39. ("Epiblemum scenicum") Gerhardt, '21, p. 131. ("Epiblemum scenicum") Monterosso, '24, p. 1. Bristowe, '29, p. 332. Bristowe, '41, p. 480, 499; fig. (Europe & U.S.A.)	1st legs slightly raised, stretched laterally. Chelicerae opened. Palps stretched laterally.
SYNAGELINAE		
<i>Synageles venator</i> Luc.	Bristowe, '41, p. 485. (England)	1st legs stretched forward, parallel. Abdomen wriggled or waved from side to side, sometimes raised a little.
<i>Semorina brachychelyne</i> Crane	Crane, '49, p. 37. (Venezuela)	1st legs stretched forward, @ 90° \angle , slightly raised. Abdomen raised; tends to remain high with increasing excitement.
<i>Gertschia noxiosa</i> (Hentz)	Kaston, '48, p. 451; fig. (U.S.A.)	1st legs braced laterally. Abdomen raised vertically & swung from side to side.
<i>Peckhamia picata</i> (Hentz)	Peckham, '89, p. 43. Peckham, '90, p. 121; fig. (U.S.A.)	Carapace high. 1st legs on ground, bent, convex sur- face forward. Abdomen raised vertically. Spider sways from side to side.

TABLE II (cont.)

Comparative Display Data in Seven Subfamilies of Salticid Spiders.

Threat Posture & Fighting	Principal Apparent Morphological Adaptations to Display	Locomotion & Remarks
MARPISSINAE (cont.)		
	Slight enlargement basal half of 1st & 2nd legs.	♀ vibrates palps.
Jaws opened; pressed against those of opponent.	1st legs elongated, enlarged, darkened.	
Usually ♂♂ pay no attention to each other; no distinctive mo- tions; rarely courtship to mir- ror image in closed vial.	1st legs elongated, enlarged, darkened.	Runs; jumps only on prey or to cross gaps. 1st legs little used in walking. ♀ vibrates pale palps.
	1st legs elongated, enlarged, darkened.	
	1st legs elongated, enlarged, darkened. Abdomen boldly striped.	1st legs not used in walking, extended forward & raised to clear ground.
	Chelicerae elongated, en- larged, darkened. 1st legs slightly elongated.	
Like courtship, but jaws opened wider and palps not stretched to sides. (No mirror display. Crane obs. U.S.A.)	Chelicerae elongated, en- larged, darkened. 1st legs slightly elongated.	Jerky walk; hops when pur- sued. (Crane obs. U.S.A.).
SYNAGELINAE (cont.)		
	1st legs enlarged.	
Apparently no inter-male dis- play. No mirror display.	1st legs elongated, enlarged, darkened. Abdomen dark with 2 dorsal white spots.	Runs; jumps only on prey or to cross gaps. 1st legs stretched to front, parallel; do not touch ground. ♀ vibrates palps.
	1st legs elongated, enlarged, darkened. Abdomen dark with dorsal white bands.	Runs slowly, irregularly, like ant. (Emerton, 1909).
	1st legs elongated, enlarged, darkened. Abdomen dark with dorsal white bands.	

TABLE II.

Comparative Display Data in Seven Subfamilies of Salticid Spiders.

Name	Display References	Courtship Posture (Stage I)
MARPISSINAE		
<i>Marpissa undata</i> (De Geer)	Peckham, '89, p. 43; fig. ("Marpissa familiaris") (U.S.A.)	Carapace high. 1st & 2nd legs raised slightly, stretched laterally. Abdomen pendent.
<i>Marpissa rumpfi</i> Scop.	Bristowe, '29, p. 330-352. Bristowe, '41, p. 480; fig. (England)	Carapace high. 1st legs raised vertically, parallel. Abdomen raised.
<i>Menemerus bivittatus</i> (Dufour)	Crane (Unpublished observations) (Venezuela)	Carapace low. 1st legs raised slightly, stretched antero-laterally; 2nd legs extended forward. Abdomen level.
<i>Hycia nivoyi</i> Luc.	Berland, '27, p. 15; fig. Bristowe, '29, p. 329; fig. Bristowe, '41, p. 484; fig. (Europe)	1st legs stretched forward @ 45°; raised & lowered. Abdomen often bent sideways. (cf. Dendryphantinae).
<i>Hycia pikei</i> Peckham	Kaston, '48, p. 455; fig. (U.S.A.)	Carapace low. 1st legs raised vertically @ 45°. 2nd legs extended forward. Abdomen raised.
<i>Salticus cingulatus</i> Panz.	Bristowe, '29, p. 332. (England)	Similar to <i>S. scenicus</i> .
<i>Salticus scenicus</i> (Linn.)	Peckham, '89, p. 39. ("Epiblemum scenicum") Gerhardt, '21, p. 131. ("Epiblemum scenicum") Monterosso, '24, p. 1. Bristowe, '29, p. 332. Bristowe, '41, p. 480, 499; fig. (Europe & U.S.A.)	1st legs slightly raised, stretched laterally. Chelicerae opened. Palps stretched laterally.
SYNAGELINAE		
<i>Synageles venator</i> Luc.	Bristowe, '41, p. 485. (England)	1st legs stretched forward, parallel. Abdomen wriggled or waved from side to side, sometimes raised a little.
<i>Semorina brachychelyne</i> Crane	Crane, '49, p. 37. (Venezuela)	1st legs stretched forward, @ 90°/4, slightly raised. Abdomen raised; tends to remain high with increasing excitement.
<i>Gertschia noziosa</i> (Hentz)	Kaston, '48, p. 451; fig. (U.S.A.)	1st legs braced laterally. Abdomen raised vertically & swung from side to side.
<i>Peckhamia picata</i> (Hentz)	Peckham, '89, p. 43. Peckham, '90, p. 121; fig. (U.S.A.)	Carapace high. 1st legs on ground, bent, convex surface forward. Abdomen raised vertically. Spider sways from side to side.

TABLE II (cont.)

Comparative Display Data in Seven Subfamilies of Salticid Spiders.

Threat Posture & Fighting	Principal Apparent Morphological Adaptations to Display	Locomotion & Remarks
MARPISSINAE (cont.)		
	Slight enlargement basal half of 1st & 2nd legs.	♀ vibrates palps.
Jaws opened; pressed against those of opponent.	1st legs elongated, enlarged, darkened.	
Usually ♂♂ pay no attention to each other; no distinctive motions; rarely courtship to mirror image in closed vial.	1st legs elongated, enlarged, darkened.	Runs; jumps only on prey or to cross gaps. 1st legs little used in walking. ♀ vibrates pale palps.
	1st legs elongated, enlarged, darkened.	
	1st legs elongated, enlarged, darkened. Abdomen boldly striped.	1st legs not used in walking, extended forward & raised to clear ground.
	Chelicerae elongated, enlarged, darkened. 1st legs slightly elongated.	
Like courtship, but jaws opened wider and palps not stretched to sides. (No mirror display. Crane obs. U.S.A.)	Chelicerae elongated, enlarged, darkened. 1st legs slightly elongated.	Jerky walk; hops when pursued. (Crane obs. U.S.A.).
SYNAGELINAE (cont.)		
	1st legs enlarged.	
Apparently no inter-male display. No mirror display.	1st legs elongated, enlarged, darkened. Abdomen dark with 2 dorsal white spots.	Runs; jumps only on prey or to cross gaps. 1st legs stretched to front, parallel; do not touch ground. ♀ vibrates palps.
	1st legs elongated, enlarged, darkened. Abdomen dark with dorsal white bands.	Runs slowly, irregularly, like ant. (Emerton, 1909).
	1st legs elongated, enlarged, darkened. Abdomen dark with dorsal white bands.	

TABLE II. (cont.)
Comparative Display Data in Seven Subfamilies of Salticid Spiders.

Name	Display References	Courtship Posture (Stage I)
LYSSOMANINAE		
<i>Lyssomanes bradyspilus</i> Crane	Crane, '49, p. 34; see also Text-fig. 8, this paper. (Venezuela)	Carapace high, occasionally bobbed No legs raised; 1st 3 prs. brace forward. Palps sometimes tap ground. Abdomen pendent, twitched. Prolonged posing in this position as— Rate of retinal motions within AMI are accelerated.
DENDRYPHANTINAE		
<i>Ashtabula furcillata</i> Crane	Crane, '49, p. 41; fig. (Venezuela)	Carapace high. 1st legs stretched laterally, wave up & down. Palps jerk; later are quiet. Abdomen turned to side.
<i>Hentzia mitrata</i> (Hentz)	Peckham, '89, p. 49; fig. ("Icius mitratus") (U.S.A.)	Carapace high. 1st legs stretched laterally, held a right Δ to body. Abdomen twisted to side.
<i>Icius elegans</i> (Hentz)	Peckham, '89, p. 46. ("Dendryphantes elegans") (U.S.A.)	1st legs waved "in way that remind one of a wind-mill". Later, re volves on tip-toe.
<i>Sassacus ocellatus</i> Crane	Crane, '49, p. 45. (Venezuela)	Carapace scarcely elevated. 1st legs stretched up & out at right Δ to each other. Chelicerae closed. Palps vibrated occasionally. Abdomen sometimes twisted slightly to side, held motionless.
<i>Sassacus flavicinctus</i> Crane	Crane, '49, p. 41. (Venezuela)	Carapace moderately high. 1st legs stretched up at wide Δ to each other. Chelicerae stretched sideways, but closed. Palps stretched sideways. Abdomen trailed inconspicuously from side to side. Later: Carapace & abdomen slowly rocked from side to side.
<i>Metaphidippus protervus</i> (Walck.) and/or <i>M. galathea</i> (Walck.)	Peckham, '89, p. 45; fig. ("Dendryphantes capitatus") (U.S.A.)	Carapace low. 1st legs stretched forward, close to ground, slightly curved with tip turned up. Palps given circular movement. Later, lies on side, legs still extend ed.
<i>Paraphidippus marginatus</i> (Walck.)	Peckham, '89, p. 50; fig. ("Philaeus militaris") (U.S.A.)	1st legs raised, curved toward each other, tips nearly meeting. Palps moved up and down.

TABLE II (cont.)
Comparative Display Data in Seven Subfamilies of Salticid Spiders.

Threat Posture & Fighting	Principal Apparent Morphological Adaptations to Display	Locomotion & Remarks
LYSSOMANINAE (cont.)		
Threat display rarely induced; posture as in courtship, but no bobbing, no abdominal twitching, no acceleration of retinal motions.	Distal portion of black retina contrasts with green surroundings.	Runs in short spurts. Jumps only in final pounce on prey.
Fighting & mirror display absent.	Chelicerae elongated but not specially displayed.	Palps pendent, pat ground during pauses. 1st legs take part in locomotion. ♀ sags to side when watching display; muscular activity in eyes increase as in ♂.
DENDRYPHANTINAE (cont.)		
Apparently no inter-male display. No mirror display.	1st legs elongated, enlarged, darkened, fringed. Abdomen with lateral white stripe bounded by iridescence.	Runs; jumps only on prey or to cross gaps. 1st legs unused in progress, held forward, they & palps tap ground; waved in air in pauses. ♀ vibrates palps.
Same as courtship. Chases rivals away.	1st legs elongated, fringed. Abdomen with lateral white stripe bounded by darker.	♀ "indifferent"; sometimes attacks ♂.
	Carapace with frontal tufts. 1st legs elongated; tibia fringed, black-spotted. Both sexes covered with iridescent scales.	♀ irritable, prone to attack; later raises abdomen or turns it sideways.
Stage I: Similar to courtship, except chelicerae partly unsheathed, & no distinct abdominal twisting.	1st legs elongated, enlarged, darkened, with white scales.	Runs; jumps only to catch prey & cross gaps.
Stage II: Actual fighting, 1st legs raised vertically; chelicerae wide open; palps extended laterally. Clinching frequent, with occasional injury; no deaths seen.	Chelicerae elongate, enlarged, darkened. Clypeus with white band. Abdomen with large, sub-distal, white-barred black spots.	1st legs held forward, scarcely touch ground; these & palps wave in air & tap ground, during pauses. ♀ once did weak mutual display.
Stage I: Like courtship except no rocking.	1st legs elongated, enlarged, darkened.	Runs; jumps occasionally when pursued, as well as to catch prey & cross gaps.
Stage II: (Rare). Chelicerae unsheathed, extended forward; 1st legs raised vertically; clinching; no injuries seen.	Chelicerae elongate, enlarged, darkened.	Palpates ground & waves 1st legs less than <i>S. ocellatus</i> .
Occasional mirror display.	Clypeus with yellow band.	
Distinct from courtship. 1st legs raised. Sparring, chasing & clinching without injury.	1st legs elongated, enlarged. White markings on dark palps & clypeus.	Runs, but hops freely when pursued, as well as to catch prey to cross gaps. Palps often jerk. 1st legs not waved. Take some part in walking. (Crane obs. U.S.A.)
Distinct from courtship. 1st legs raised. Palps vibrated. Abdomen dragged to either side. Chasing and clinching without injury.	1st legs elongated, enlarged. Chelicerae elongated.	♂♂ guard immature ♀♀ until molt.

TABLE II. (cont.)

Comparative Display Data in Seven Subfamilies of Salticid Spiders.

Name	Display References	Courtship Posture (Stage I)
LYSSOMANINAE		
<i>Lyssomanes bradyspilus</i> Crane	Crane, '49, p. 34; see also Text-fig. 8, this paper. (Venezuela)	Carapace high, occasionally bobbed. No legs raised; 1st 3 prs. braced forward. Palps sometimes tap ground. Abdomen pendent, twitched. Prolonged posing in this position, as Rate of retinal motions within AME are accelerated.
DENDRYPHANTINAE		
<i>Ashtabula furcillata</i> Crane	Crane, '49, p. 41; fig. (Venezuela)	Carapace high. 1st legs stretched laterally, waved up & down. Palps jerk; later are quiet. Abdomen turned to side.
<i>Hentzia mitrata</i> (Hentz)	Peckham, '89, p. 49; fig. ("Icius mitratus") (U.S.A.)	Carapace high. 1st legs stretched laterally, held at right Δ to body. Abdomen twisted to side.
<i>Icius elegans</i> (Hentz)	Peckham, 89, p. 46. ("Dendryphantes elegans") (U.S.A.)	1st legs waved "in way that reminds one of a wind-mill". Later, revolves on tip-toe.
<i>Sassacus ocellatus</i> Crane	Crane, '49, p. 45. (Venezuela)	Carapace scarcely elevated. 1st legs stretched up & out at right Δ to each other. Chelicerae closed. Palps vibrated occasionally. Abdomen sometimes twisted slightly to side, held motionless.
<i>Sassacus flavicinctus</i> Crane	Crane, '49, p. 41. (Venezuela)	Carapace moderately high. 1st legs stretched up at wide Δ to each other. Chelicerae stretched sideways, but closed. Palps stretched sideways. Abdomen trailed inconspicuously from side to side. Later: Carapace & abdomen slowly rocked from side to side.
<i>Metaphidippus protervus</i> (Walck.) and/or <i>M. galathea</i> (Walck.)	Peckham, '89, p. 45; fig. ("Dendryphantes capitatus") (U.S.A.)	Carapace low. 1st legs stretched forward, close to ground, slightly curved with tips turned up. Palps given circular movement. Later, lies on side, legs still extended.
<i>Paraphidippus marginatus</i> (Walck.)	Peckham, '89, p. 50; fig. ("Philaenus militaris") (U.S.A.)	1st legs raised, curved toward each other, tips nearly meeting. Palps moved up and down.

TABLE II (cont.)

Comparative Display Data in Seven Subfamilies of Salticid Spiders.

Threat Posture & Fighting	Principal Apparent Morphological Adaptations to Display	Locomotion & Remarks
LYSSOMANINAE (cont.)		
Threat display rarely induced; posture as in courtship, but no bobbing, no abdominal twitching, no acceleration of retinal motions. Fighting & mirror display absent.	Distal portion of black retina contrasts with green surroundings. Chelicerae elongated but not specially displayed.	Runs in short spurts. Jumps only in final pounce on prey. Palps pendent, pat ground during pauses. 1st legs take part in locomotion. ♀ sags to side when watching display; muscular activity in eyes increase as in ♂.
DENDRYPHANTINAE (cont.)		
Apparently no inter-male display. No mirror display.	1st legs elongated, enlarged, darkened, fringed. Abdomen with lateral white stripe bounded by iridescent.	Runs; jumps only on prey or to cross gaps. 1st legs unused in progress, held forward, they & palps tap ground; waved in air in pauses. ♀ vibrates palps.
Same as courtship. Chases rivals away.	1st legs elongated, fringed. Abdomen with lateral white stripe bounded by darker.	♀ "indifferent"; sometimes attacks ♂.
Stage I: Similar to courtship, except chelicerae partly unsheathed, & no distinct abdominal twisting. Stage II: Actual fighting, 1st legs raised vertically; chelicerae wide open; palps extended laterally. Clinching frequent, with occasional injury; no deaths seen.	Carapace with frontal tufts. 1st legs elongated; tibia fringed, black-spotted. Both sexes covered with iridescent scales. 1st legs elongated, enlarged, darkened, with white scales. Chelicerae elongate, enlarged darkened. Clypeus with white band. Abdomen with large, subdistal, white-barred black spots.	♀ irritable, prone to attack; later raises abdomen or turns it sideways.
Stage I: Like courtship except no rocking. Stage II: (Rare). Chelicerae unsheathed, extended forward; 1st legs raised vertically; clinching; no injuries seen. Occasional mirror display.	1st legs elongated, enlarged, darkened. Chelicerae elongate, enlarged, darkened. Clypeus with yellow band.	Runs; jumps only to catch prey & cross gaps. 1st legs held forward, scarcely touch ground; these & palps wave in air & tap ground, during pauses. ♀ once did weak mutual display.
Distinct from courtship. 1st legs raised. Sparring, chasing & clinching without injury.	1st legs elongated, enlarged. White markings on dark palps & clypeus.	Runs; jumps occasionally when pursued, as well as to catch prey & cross gaps. Palps often jerk. 1st legs not waved. Take some part in walking. (Crane obs. U.S.A.)
Distinct from courtship. 1st legs raised. Palps vibrated. Abdomen dragged to either side. Chasing and clinching without injury.	1st legs elongated, enlarged. Chelicerae elongated.	♂♂ guard immature ♀♀ until molt.

TABLE II. (cont.)
Comparative Display Data in Seven Subfamilies of Salticid Spiders.

Name	Display References	Courtship Posture (Stage I)
DENDRYPHANTINAE (cont.)		
<i>Phidippus audax</i> (Hentz)	Peckham, '89, p. 45. ("Phidippus morsitans") Kaston, '36, p. 120; fig. (U.S.A.)	Carapace moderately high. 1st legs raised in 2 jerks, stretched obliquely out at \angle of 45° to ground; later waved alternately Palps raised and lowered rapidly when close to ♀.
<i>Phidippus clarus</i> Keyserling	Kaston, '36, p. 118; fig. (U.S.A.)	Carapace moderately high. 1st legs stretched out, the femur obliquely up, other segments paralleling ground. Palps sometimes widely spread. Abdomen now & then moved from side to side.
<i>Phidippus purpuratus</i> Keyserling	Kaston, '36, p. 121; fig. (U.S.A.)	Carapace high. 1st legs stretched out, held higher than in <i>clarus</i> & <i>audax</i> ; waved. Palps held wide apart, parallel with each other, occasionally drummed on ground. Abdomen dropped.
<i>Phidippus whitmanii</i> Peckham	Peckham, '89, p. 44. ("Phidippus rufus") (U.S.A.)	Carapace high. 1st legs stretched forward & up, crossed at tips. Palps held wide apart, parallel with 2nd legs. Abdomen dropped. Sways during advance.
HYLLINAE		
<i>Evarcha falcata</i> Bl.	Bristowe, '29, p. 333. Bristowe, '41, p. 480. (England) Homann, '28, p. 249; fig. ("E. blanchardi") (Germany)	Some waving of 1st legs & twitching of abdomen, but tends to leap on ♀ with almost no display.
<i>Philaeus chrysops</i> Poda	Berland, '14, p. 116. Thomas, '29, p. 267. Bonnet, '33, p. 139; fig. (France)	Carapace high. 1st legs raised & waved up & down. Palps vibrated. Abdomen slightly elevated. Courtship sometimes almost absent. Leaps on ♀ suddenly.
<i>Phiale flammea</i> Crane	Crane, '49, p. 48. (Venezuela)	Carapace high. 1st legs raised at 45° \angle to each other & ground. Palps vibrated irregularly. Abdomen lowered. Carapace rocked from side to side. Later, sinks low, 1st legs stretched to front.

TABLE II (cont.)
Comparative Display Data in Seven Subfamilies of Salticid Spiders.

Threat Posture & Fighting	Principal Apparent Morphological Adaptations to Display	Locomotion & Remarks
DENDRYPHANTINAE (cont.)		
like courtship, until opponents close; then chelicerae & fangs opened wide; some ♀ fighting.	1st legs elongated, enlarged, with white fringes and scales. Palps with white scales.	Both sexes savage, prone to eat mate.
as in <i>P. audax</i> .	1st legs elongated, enlarged, lightly fringed. Palps with white band.	
	1st legs elongated, enlarged, heavily fringed. Clypeus with white fringe.	
	1st legs elongated, enlarged, heavily fringed.	Hopping well developed.
HYLLINAE (cont.)		
	1st legs elongated, enlarged, darkened; palps pale, white-haired.	
	1st legs elongated, darkened with light tufts & scales.	Excellent visual acuity; hops skilfully when pursued. Berland & Thomas saw frequent leg-waving when spiders were alone in field and in clean boxes; Bonnet saw waving only before ♀♀.
differs from courtship in quiet palps & absence of low stage. t close quarters, chelicerae open, 1st legs spread widely, often touch opponent's; no injuries.	1st legs elongated, darkened. Clypeus & palps with buffy yellow bands against black.	Basically a runner although jumps readily over gaps; 1st legs little used in walking, habitually waved during pauses; true also of ♀♀ & young. ♀ raises 1st legs & vibrates palps during display.
displays freely to mirror.		

TABLE II. (cont.)
Comparative Display Data in Seven Subfamilies of Salticid Spiders.

Name	Display References	Courtship Posture (Stage I)
DENDRYPHANTINAE (cont.)		
<i>Phidippus audax</i> (Hentz)	Peckham, '89, p. 45. ("Phidippus morsitans") Kaston, '36, p. 120; fig. (U.S.A.)	Carapace moderately high. 1st legs raised in 2 jerks, stretched obliquely out at \angle of 45° to ground; later waved alternately. Palps raised and lowered rapidly when close to ♀.
<i>Phidippus clarus</i> Keyserling	Kaston, '36, p. 118; fig. (U.S.A.)	Carapace moderately high. 1st legs stretched out, the femur obliquely up, other segments paralleling ground. Palps sometimes widely spread. Abdomen now & then moved from side to side.
<i>Phidippus purpuratus</i> Keyserling	Kaston, '36, p. 121; fig. (U.S.A.)	Carapace high. 1st legs stretched out, held higher than in <i>clarus</i> & <i>audax</i> ; waved. Palps held wide apart, parallel with each other, occasionally drummed on ground. Abdomen dropped.
<i>Phidippus whitmanii</i> Peckham	Peckham, '89, p. 44. ("Phidippus rufus") (U.S.A.)	Carapace high. 1st legs stretched forward & up, crossed at tips. Palps held wide apart, parallel with 2nd legs. Abdomen dropped. Sways during advance.
HYLLINAE		
<i>Evarcha falcata</i> Bl.	Bristowe, '29, p. 333. Bristowe, '41, p. 480. (England) Homann, '28, p. 249; fig. ("E. blanchardi") (Germany)	Some waving of 1st legs & twitching of abdomen, but tends to leap on ♀ with almost no display.
<i>Philaeus chrysops</i> Poda	Berland, '14, p. 116. Thomas, '29, p. 267. Bonnet, '33, p. 139; fig. (France)	Carapace high. 1st legs raised & waved up & down. Palps vibrated. Abdomen slightly elevated. Courtship sometimes almost absent. Leaps on ♀ suddenly.
<i>Phiale flammea</i> Crane	Crane, '49, p. 48. (Venezuela)	Carapace high. 1st legs raised at 45° \angle to each other & ground. Palps vibrated irregularly. Abdomen lowered. Carapace rocked from side to side. Later, sinks low, 1st legs stretched to front.

TABLE II (cont.)
Comparative Display Data in Seven Subfamilies of Salticid Spiders.

Threat Posture & Fighting	Principal Apparent Morphological Adaptations to Display	Locomotion & Remarks
DENDRYPHANTINAE (cont.)		
Like courtship, until opponents close; then chelicerae & fangs opened wide; some ♀ fighting.	1st legs elongated, enlarged, with white fringes and scales. Palps with white scales.	Both sexes savage, prone to eat mate.
As in <i>P. audax</i> .	1st legs elongated, enlarged, lightly fringed. Palps with white band.	
	1st legs elongated, enlarged, heavily fringed. Clypeus with white fringe.	
	1st legs elongated, enlarged, heavily fringed.	Hopping well developed.
HYLLINAE (cont.)		
	1st legs elongated, enlarged, darkened; palps pale, white- haired.	
	1st legs elongated, darkened with light tufts & scales.	Excellent visual acuity; hops skillfully when pursued. Berland & Thomas saw fre- quent leg-waving when spiders were alone in field and in clean boxes; Bonnet saw waving only before ♀♀.
Differs from courtship in quiet palps & absence of low stage. At close quarters, chelicerae open, 1st legs spread widely, often touch opponent's; no in- juries. Displays freely to mirror.	1st legs elongated, darkened. Clypeus & palps with buffy yellow bands against black.	Basically a runner although jumps readily over gaps; 1st legs little used in walk- ing, habitually waved dur- ing pauses; true also of ♀♀ & young. ♀ raises 1st legs & vibrates palps during display.

TABLE II. (cont.)
Comparative Display Data in Seven Subfamilies of Salticid Spiders.

Name	Display References	Courtship Posture (Stage I)
PLEXIPPINAE		
<i>Plexippus paykullii</i> Aud.	Crane (unpublished obs.); Pl. I, fig. 1, this paper. (Venezuela)	Carapace very high. 1st legs stretched forward, up & out at varying wide \angle , higher with excitement; no waving. Palps quiet. Abdomen pendent. Prolonged posing in display position.
<i>Eustiromastix</i> sp.	Crane (unpublished obs.). (Venezuela)	Carapace high. 1st legs raised antero-laterally @ \angle of 45° to ground; sometimes jerked, & raised higher. Palps vibrate. Abdomen horizontal. Some posing in display position.
<i>Saitis barbipes</i> Sim.	Berland, '23, p. 206. Berland, '27, p. 15; fig. (France)	3rd legs wave.
<i>Corythalia xanthopa</i> Crane	Crane, '48.1, p. 35; figs. (also, see footnote, this paper, p. 183). (Venezuela)	Carapace moderately high. Palps hanging, motionless. Abdomen slightly below horizontal Stage Ia: Side-to-side rocking, all feet on ground. Stage Ib: 1st legs stretched forward, straight, parallel @ \angle of 45° to ground. No posing in display position.
<i>Corythalia chalcea</i> Crane	Crane, '48.1, p. 21; figs. (Venezuela)	Carapace moderately high. Palps hanging, motionless. Abdomen about horizontal. 3rd legs stretched out, waved up & down in unison above the horizontal. No posing in display position.
<i>Corythalia fulgipedia</i> Crane	Crane, '48.1, p. 28; figs. (Venezuela)	Carapace progressively lowered. Palps jerked in unison. Abdomen about horizontal. 1st, 2nd, & 3rd legs stretched far out to sides, the 3rd legs being slightly intermittently raised & vibrated up & down in unison with body. No posing in display position.

TABLE II (cont.)

Comparative Display Data in Seven Subfamilies of Salticid Spiders.

Threat Posture & Fighting	Principal Apparent Morphological Adaptations to Display	Locomotion & Remarks
PLEXIPPINAE (cont.)		
No inter-male displays seen. Mirror response not tested.	1st legs elongated, enlarged, darkened. White clypeus band against black.	Hops often even during ordinary progress. ♀ completely passive.
Scarcely developed; rarely, brief threat similar to early courtship but abdomen lowered & palps quiet. Occasional brief mirror display, sometimes ending in attack.	1st legs slightly longer, thicker, blacker than others.	Hops often even during ordinary progress. 1st legs take active part in walking. Palps quiet. ♀ extremely savage both before & after mating; often kills ♂.
Same as courtship.	3rd legs elongated, compressed, fringed.	Performs display motions even when alone in clean boxes.
Completely distinct from courtship. Carapace very high. Palps motionless, flexed, their yellow scales continuing band of clypeus. Abdomen pendent. 2nd, 3rd & 4th legs off ground, raised successively higher. Prolonged posing. No fighting. Displays freely to mirror.	Palps & clypeus with yellow bands. 2nd, 3rd & 4th legs fringed, compressed, with iridescent patches; 3rd & 4th legs elongated.	Ordinary progress consists largely of hopping. 1st legs take active part in walking. Palps quiet. ♀ not aggressive; when watching display, sits high with braced legs until receptive, then crouches.
Distinct from courtship, although same legs used. Differs in waving 3rd legs below horizontal, often in an arch; prolonged posing. Palps flexed & stiff. No fighting. Displays freely to mirror.	1st, 2nd & 3rd legs fringed, compressed, with iridescent patches; 3rd legs elongated.	Locomotion as in <i>xanthopa</i> . ♀ sometimes aggressive, may do some form of reciprocal display.
Distinct from courtship, although similar in very first phase, & same legs used throughout. Whereas in courtship carapace sinks lower, in threat it rises higher. At peak, all legs are drawn close in & stretch up, 2nd tarsi leave ground & 3rd legs are raised slightly; body rocks from side to side; posing with 3rd legs arched frequent. Palps jerked at beginning, later flexed & stiff. No fighting. Displays freely to mirror.	1st, 2nd & 3rd legs fringed, compressed, with iridescent patches strongly developed; 3rd legs elongated. Palps with white patches.	Locomotion as in <i>xanthopa</i> . ♀ more aggressive than most salticids, although not seen to injure ♂; when stimulated performs rough, reciprocal display.

TABLE II. (cont.)

Comparative Display Data in Seven Subfamilies of Salticid Spiders.

Name	Display References	Courtship Posture (Stage I)
PLEXIPPINAE		
<i>Plexippus paykullii</i> Aud.	Crane (unpublished obs.); Pl. I, fig. 1, this paper. (Venezuela)	Carapace very high. 1st legs stretched forward, up & out, at varying wide Δ , higher with excitement; no waving. Palps quiet. Abdomen pendent. Prolonged posing in display position.
<i>Eustiromastix</i> sp.	Crane (unpublished obs.). (Venezuela)	Carapace high. 1st legs raised antero-laterally @ \angle of 45° to ground; sometimes jerked, & raised higher. Palps vibrate. Abdomen horizontal. Some posing in display position.
<i>Saitis barbipes</i> Sim.	Berland, '23, p. 206. Bertrand, '27, p. 15; fig. (France)	3rd legs wave.
<i>Corythalia xanthopa</i> Crane	Crane, '48.1, p. 35; figs. (also, see footnote, this paper, p. 183). (Venezuela)	Carapace moderately high. Palps hanging, motionless. Abdomen slightly below horizontal. Stage Ia: Side-to-side rocking, all feet on ground. Stage Ib: 1st legs stretched forward, straight, parallel @ \angle of 45° to ground. No posing in display position.
<i>Corythalia chalcona</i> Crane	Crane, '48.1, p. 21; figs. (Venezuela)	Carapace moderately high. Palps hanging, motionless. Abdomen about horizontal. 3rd legs stretched out, waved up & down in unison above the horizontal. No posing in display position.
<i>Corythalia fulgipedia</i> Crane	Crane, '48.1, p. 28; figs. (Venezuela)	Carapace progressively lowered. Palps jerked in unison. Abdomen about horizontal. 1st, 2nd, & 3rd legs stretched far out to sides, the 3rd legs being slightly intermittently raised & vibrated up & down in unison with body. No posing in display position.

TABLE II (cont.)

Comparative Display Data in Seven Subfamilies of Salticid Spiders.

Threat Posture & Fighting	Principal Apparent Morphological Adaptations to Display	Locomotion & Remarks
PLEXIPPINAE (cont.)		
No inter-male displays seen. Mirror response not tested.	1st legs elongated, enlarged, darkened. White clypeus band against black.	Hops often even during ordinary progress. ♀ completely passive.
Scarcely developed; rarely, brief threat similar to early courtship but abdomen lowered & palps quiet. Occasional brief mirror display, sometimes ending in attack.	1st legs slightly longer, thicker, blacker than others.	Hops often even during ordinary progress. 1st legs take active part in walking. Palps quiet. ♀ extremely savage both before & after mating; often kills ♂.
Same as courtship.	3rd legs elongated, compressed, fringed.	Performs display motions even when alone in clean boxes.
Completely distinct from courtship. Carapace very high. Palps motionless, flexed, their yellow scales continuing band of clypeus. Abdomen pendent. 2nd, 3rd & 4th legs off ground, raised successively higher. Prolonged posing. No fighting. Displays freely to mirror.	Palps & clypeus with yellow bands. 2nd, 3rd & 4th legs fringed, compressed, with iridescent patches; 3rd & 4th legs elongated.	Ordinary progress consists largely of hopping. 1st legs take active part in walking. Palps quiet. ♀ not aggressive; when watching display, sits high with braced legs until receptive, then crouches.
Distinct from courtship, although same legs used. Differs in waving 3rd legs below horizontal, often in an arch; prolonged posing. Palps flexed & stiff. No fighting. Displays freely to mirror.	1st, 2nd & 3rd legs fringed, compressed, with iridescent patches; 3rd legs elongated.	Locomotion as in <i>xanthopa</i> . ♀ sometimes aggressive, may do some form of reciprocal display.
Distinct from courtship, although similar in very first phase, & same legs used throughout. Whereas in courtship carapace sinks lower, in threat it rises higher. At peak, all legs are drawn close in & stretch up; 2nd tarsi leave ground & 3rd legs are raised slightly; body rocks from side to side; posing with 3rd legs arched frequent. Palps jerked at beginning, later flexed & stiff. No fighting. Displays freely to mirror.	1st, 2nd & 3rd legs fringed, compressed, with iridescent patches strongly developed; 3rd legs elongated. Palps with white patches.	Locomotion as in <i>xanthopa</i> . ♀ more aggressive than most salticids, although not seen to injure ♂; when stimulated performs rough, reciprocal display.

TABLE II. (cont.)
Comparative Display Data in Seven Subfamilies of Salticid Spiders.

Name	Display References	Courtship Posture (Stage I)
MAGONINAE		
<i>Maevia vittata</i> (Hentz)	Peckham, '89, p. 54; fig. ("Astia vittata") (Wisconsin, U.S.A.) Painter, '13, p. 625. (Connecticut, U.S.A.)	Displays of the 2 forms differ. <i>Gray form</i> : Carapace high; 1st leg raised, waved, palps stretch sideways; abdomen down; later whole body low, 1st & 2nd leg forward, tips touching; palp forward. (Peckham, Wisc.). Low stage precedes high stage (Painter, Conn.). <i>Black, tufted form</i> : Carapace very high; 1st legs raised & waved, o held high in pose. (Peckham & Painter).
<i>Mago dentichelis</i> Crane	Crane, '49, p. 48; fig. (Venezuela)	Carapace slightly raised. 1st legs stretched sideways & slightly forward; waved alternately up and down or held in pose. 2nd tarsi touch ground, far out & slightly forward. Abdomen sometimes vibrated.
<i>Ballus depressus</i> Walk.	Bristowe, '31, p. 1409; fig. Bristowe, '41, p. 484; fig. (England)	All legs on ground, drawn in, sway; body from side to side.

under consideration in this paper. Text-fig. 1 and Table III will give some idea of the variety of display motions throughout the family. All displays unite at least several of the listed movements, and many involve all of the major headings except that of retinal motion, which so far appears to operate as part of the signal mechanism only in *Lyssomanes*.

No less varied are the forms of "ornamentation" in the family; these occur too often on displayed appendages to be explained only by chance mutations, metabolic processes, other behavior patterns, etc. They include many specializations of size, shape, hair concentration, scalation and pigmentation, several forms usually occurring in a single spider. For example, the first legs, which always enter at least into Stage II courtships, are often elongated, thickened and much darker than the others; in addition, the palps, which frequently vibrate during display, in many species show patches of shiny white scales. Again, in *Corythalia xanthopa*, the fourth legs, elevated only in threat display, are prominently fringed; in the related *C. chalcea*, in which they never leave the ground, fringes are absent. Many other examples occur in the literature, of which the Peckham's original series are among the best (1889, 1890). The striking

point is that any appendage specially exhibited in epigamic display usually shows some differentiation which is to human eyes conspicuous.

However, two other obvious points must be kept in mind. First, not all parts active in display are so ornamented; an example is the brown abdomen of *Semorina*, relieved only with small, pale inconstant spots. Second, not all parts conspicuously ornamented (again, to human eyes) play any demonstrable part whatsoever in display. Examples are the bright scarlet abdomen of *Phiale flammea* and the striking carapace bands of various *Phiale* and *Corythalia*.

B. HISTORICAL REVIEW.

The history of the study of salticid display reflects the changing ideas of evolutionists. The Peckhams pioneered both in the recording and explanation of epigamic display and of the apparently correlated ornamentation (1889, 1890). According to them, the phenomena were due to direct Darwinian sexual selection; the females, consciously or unconsciously, were affected by the performances, colors and beauty of the males, selecting the most handsome or at least the most striking. Male battles were initiated both for simple possession of a mate and as sham contests for the females' edification. The Peck-

TABLE II. (cont.)
Comparative Display Data in Seven Subfamilies of Salticid Spiders.

Threat Posture & Fighting	Principal Apparent Morphological Adaptations to Display	Locomotion & Remarks
MAGONINAE (cont.)		
Wave 1st legs at each other but "quarrels . . . harmless" (Peckham). Displays to mirror.	Tufted form is black anteriorly, has cephalic tufts.	Peckham & Painter disagree on selection value of dimorphism. ♀♀ irritable; fight each other.
Stage I: Similar to courtship. Stage II: 1st legs waved higher, almost meet overhead; when lowered, 1st & 2nd tarsi rub together. Rarely, chelicerae opened and knocked repeatedly against opponent's; no injuries. Displays to mirror.	1st & 2nd legs enlarged, blackened.	5 other Venezuelan magoninids use all legs actively in walking, hop freely during ordinary locomotion. All include rubbing of 1st & 2nd tarsi in display. ♀ usually extends 1st legs during courtship.
	1st legs enlarged, partly blackened.	♀ vibrates light palps.

hams disagreed strongly with Wallace (1878, 1889), who attributed both performance and ornamentation to the greater vigor of the male, especially during the breeding season. Montgomery (1910) in general held Wallace's views; furthermore, he thought the displays originated in self-defense movements, which were combined with external evidence of physiological excitement. Berland (1923, 1927) attributed the behavior altogether to the exceptional physiological activity of the breeding season and its correlated excitement.

Bristowe (1941 *et ante*) has held the view that courtship in spiders in general has two fairly distinct functions, namely recognition and stimulation. Recognition he holds to be particularly important, since in spiders the female is not only carnivorous but often much larger than the male. Inter-male display and fighting he attributes essentially to mistaken identity: "It, would appear from what has been said above that the battles, which are preceded by normal courtship reactions, are the outcome of frustrated instinct, and are modifications of courting procedure brought about as a result of the different reception experienced at the hands of another male to that of a female." (1929, p. 352). He believes that display arose from the groping and chemotaxing motions of primitive spiders,

which have been modified by signs of sexual excitement, such as twitching of the abdomen. He points out that a male which produces a striking pigment spot easily visible to the female during his approach has a better chance to survive than has an individual less easily identified.

Savory agrees with Bristowe, except that he considers the division between "recognition"—for which he prefers the term "realization"—and stimulation invalid. He gives the following summary of his views on spider courtship: "If we may venture to summarize in a few words the results of so complex an activity as courtship, we may say that courtship is a chain of related instinctive actions, in which the reproductive urge suppresses the normal habits of self-protection and self-nourishment, and is accompanied internally by the physiological changes necessary to make the subsequent union possible." (1928, p. 221).

Gerhardt, who has recorded numerous spider pairings, has been most interested in copulation methods, showing that the various positions assumed by the male shed light on phylogeny. In salticids the copulation position is invariably dorsal and similar throughout the family. He has made few observations on the courtship phases of reproduction.

There has been as great discrepancy in

TABLE II. (cont.)

Comparative Display Data in Seven Subfamilies of Salticid Spiders.

Name	Display References	Courtship Posture (Stage I)
MAGONINAE		
<i>Maevia vittata</i> (Hentz)	Peckham, '89, p. 54; fig. ("Astia vittata") (Wisconsin, U.S.A.) Painter, '13, p. 625. (Connecticut, U.S.A.)	Displays of the 2 forms differ. <i>Gray form</i> : Carapace high; 1st legs raised, waved, palps stretched sideways; abdomen down; later, whole body low, 1st & 2nd legs forward, tips touching; palps forward. (Peckham, Wisc.). Low stage precedes high stage. (Painter, Conn.). <i>Black, tufted form</i> : Carapace very high; 1st legs raised & waved, or held high in pose. (Peckham & Painter).
<i>Mago dentichelis</i> Crane	Crane, '49, p. 48; fig. (Venezuela)	Carapace slightly raised. 1st legs stretched sideways & slightly forward; waved alternately up and down or held in pose. 2nd tarsi touch ground, far out & slightly forward. Abdomen sometimes vibrated.
<i>Ballus depressus</i> Walk.	Bristowe, '31, p. 1409; fig. Bristowe, '41, p. 484; fig. (England)	All legs on ground, drawn in, sways body from side to side.

under consideration in this paper. Text-fig. 1 and Table III will give some idea of the variety of display motions throughout the family. All displays unite at least several of the listed movements, and many involve all of the major headings except that of retinal motion, which so far appears to operate as part of the signal mechanism only in *Lyssomanes*.

No less varied are the forms of "ornamentation" in the family; these occur too often on displayed appendages to be explained only by chance mutations, metabolic processes, other behavior patterns, etc. They include many specializations of size, shape, hair concentration, scalation and pigmentation, several forms usually occurring in a single spider. For example, the first legs, which always enter at least into Stage II courtships, are often elongated, thickened and much darker than the others; in addition, the palps, which frequently vibrate during display, in many species show patches of shiny white scales. Again, in *Corythalia xanthopa*, the fourth legs, elevated only in threat display, are prominently fringed; in the related *C. chalcidea*, in which they never leave the ground, fringes are absent. Many other examples occur in the literature, of which the Peckham's original series are among the best (1889, 1890). The striking

point is that any appendage specially exhibited in epigamic display usually shows some differentiation which is to human eyes conspicuous.

However, two other obvious points must be kept in mind. First, not all parts active in display are so ornamented; an example is the brown abdomen of *Semorina*, relieved only with small, pale inconstant spots. Second, not all parts conspicuously ornamented (again, to human eyes) play any demonstrable part whatsoever in display. Examples are the bright scarlet abdomen of *Phiale flammea* and the striking carapace bands of various *Phiale* and *Corythalia*.

B. HISTORICAL REVIEW.

The history of the study of salticid display reflects the changing ideas of evolutionists. The Peckhams pioneered both in the recording and explanation of epigamic display and of the apparently correlated ornamentation (1889, 1890). According to them, the phenomena were due to direct Darwinian sexual selection; the females, consciously or unconsciously, were affected by the performances, colors and beauty of the males, selecting the most handsome or at least the most striking. Male battles were initiated both for simple possession of a mate and as sham contests for the females' edification. The Peck-

TABLE II. (cont.)

Comparative Display Data in Seven Subfamilies of Salticid Spiders.

Threat Posture & Fighting	Principal Apparent Morphological Adaptations to Display	Locomotion & Remarks
MAGONINAE (cont.)		
Wave 1st legs at each other but "quarrels . . . harmless" (Peckham). Displays to mirror.	Tufted form is black anteriorly, has cephalic tufts.	Peckham & Painter disagree on selection value of dimorphism. ♀♀ irritable; fight each other.
Stage I: Similar to courtship. Stage II: 1st legs waved higher, almost meet overhead; when lowered, 1st & 2nd tarsi rub together. Rarely, chelicerae opened and knocked repeatedly against opponent's; no injuries. Displays to mirror.	1st & 2nd legs enlarged, blackened.	5 other Venezuelan magonids use all legs actively in walking, hop freely during ordinary locomotion. All include rubbing of 1st & 2nd tarsi in display. ♀ usually extends 1st legs during courtship.
	1st legs enlarged, partly blackened.	♀ vibrates light palps.

hams disagreed strongly with Wallace (1878, 1889), who attributed both performance and ornamentation to the greater vigor of the male, especially during the breeding season. Montgomery (1910) in general held Wallace's views; furthermore, he thought the displays originated in self-defense movements, which were combined with external evidence of physiological excitement. Berland (1923, 1927) attributed the behavior altogether to the exceptional physiological activity of the breeding season and its correlated excitement.

Bristowe (1941 *et ante*) has held the view that courtship in spiders in general has two fairly distinct functions, namely recognition and stimulation. Recognition he holds to be particularly important, since in spiders the female is not only carnivorous but often much larger than the male. Inter-male display and fighting he attributes essentially to mistaken identity: "It would appear from what has been said above that the battles, which are preceded by normal courtship reactions, are the outcome of frustrated instinct, and are modifications of courting procedure brought about as a result of the different reception experienced at the hands of another male to that of a female." (1929, p. 352). He believes that display arose from the groping and chemotaxing motions of primitive spiders,

which have been modified by signs of sexual excitement, such as twitching of the abdomen. He points out that a male which produces a striking pigment spot easily visible to the female during his approach has a better chance to survive than has an individual less easily identified.

Savory agrees with Bristowe, except that he considers the division between "recognition"—for which he prefers the term "realization"—and stimulation invalid. He gives the following summary of his views on spider courtship: "If we may venture to summarize in a few words the results of so complex an activity as courtship, we may say that courtship is a chain of related instinctive actions, in which the reproductive urge suppresses the normal habits of self-protection and self-nourishment, and is accompanied internally by the physiological changes necessary to make the subsequent union possible." (1928, p. 221).

Gerhardt, who has recorded numerous spider pairings, has been most interested in copulation methods, showing that the various positions assumed by the male shed light on phylogeny. In salticids the copulation position is invariably dorsal and similar throughout the family. He has made few observations on the courtship phases of reproduction.

There has been as great discrepancy in

views regarding the senses involved in salticid display, as in those concerning its origin and functions. The Peckhams (1894) concluded that sight was essential, both for recognition and as stimulus for display; Petrunkevitch (1910) agreed. Montgomery (1910) apparently saw a salticid court after merely touching a female. Berland (1914, 1923, 1927) thought smell must be involved in locating the female though sight was needed to stimulate courtship. Bristowe and Locket (1926) and Bristowe (1929, 1941) thought that both sight and chemotaxis (referred to as "smell" in the earlier papers) were involved. Savory (1928, p. 215), after speaking of inter-male courtships, of the courting of immature individuals and those of other species, sometimes through glass, says in regard to spider courtship in general: "It is clear, therefore, that the stimulus which initiates the male's performance is vague, rather than definite and specific. It may act upon the sense of sight, of smell, or of touch, but the appearance or the scent of the female does not seem to be readily distinguishable from that of the male."

The most recent group of observers have concluded, along with the Peckhams and Petrunkevitch, that sight alone among salticids is the only adequate and necessary stimulus for salticid display; these workers include Homann (1928), Bonnet (1933), Heil (1936) and Kaston (1936). The latter gives a detailed review of previous work, followed by a report and discussion of observations and experiments of his own; these were conducted on thomisids, pisaurids, lycosids and salticids. His salticid examples are distributed among four Connecticut species of the genus *Phidippus* (Dendryphantinae). His conclusions, which include his results with that genus, are as follows (p. 152): "On the basis of a large number of observations and experiments with the males of 19 species from 4 families of vagabond spiders, it is pointed out that the senses involved in courtship may vary with the species. There is no evidence that a sense of smell is used in sex recognition by any spiders. At least this sense plays no part in initiating courtship activity in the male. There is no evidence that Attid males can 'recognize' the females by any sense other than sight. At any rate, it appears that the visual stimulus is the only one that suffices to incite courship in this family."

C. BASES FOR DISAGREEMENTS.

The disagreements and uncertainties among previous investigators appear to have been due principally to the following causes:

1. Although all observers have realized that display stimuli *among* the various families differed, and were roughly dependent on the development of vision, yet it does not seem to have been clear that there are large differences *within* the family, at least in salticids, in the relative importance of the

senses. On these sensory differences depend many differences in behavior.

2. Systematic attention does not seem to have been paid to the fluctuating physiological states of individual spiders.

3. The early experiments, as usual throughout the history of biological science, were not properly organized to ensure the testing of only one stimulus or characteristic at a time.

4. In later work, the compound natures of such concepts as "visual stimuli" do not seem to have been taken fully into account.

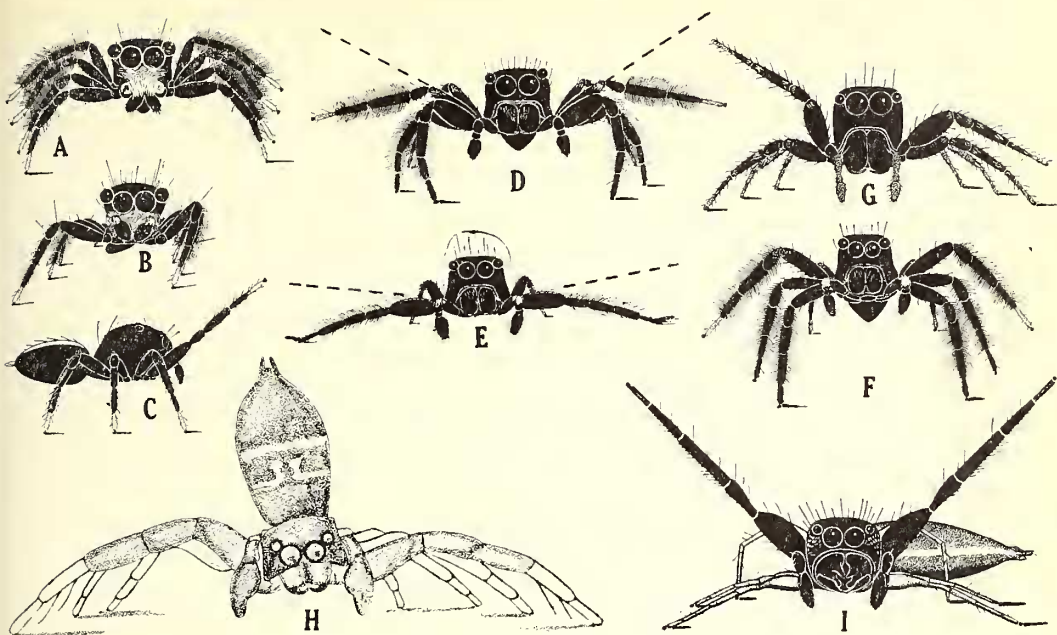
5. The recent concepts of innate releasing and directive mechanisms, as developed by Lorenz, Tinbergen, and their co-workers, do not appear to have been applied to spiders.

6. Certain motions involving sensory perception, such as waving of the first legs, have perhaps occasionally been mistaken for epigamic display.

TABLE III.

Principal Motions Reported in Salticid Display Literature.

1. General manoeuvres, involving spider as a whole.
 - a. Tacking.
 - b. Direct approach.
 - c. Leaping.
 - d. Sidling.
 - e. Semi-circling and circling.
 - f. Posing.
 - g. Crawling.
 - h. Elevation of carapace.
 - i. Rocking motions.
 - j. Bouncing motions.
2. Retinal motions within antero-median eyes.
3. Palp motions.
 - a. Vibrations, jerks, rotations; synchronized or alternate.
 - b. Flexion or extension in special attitudes.
 - c. Palpation of female or opponent.
4. Chelicerae motions.
 - a. Lateral extension of basal segment.
 - b. Extension of distal segment.
 - c. Clinching.
 - d. Biting.
5. First leg motions.
 - a. Elevation and extension forward, up or out, and to any intermediate degree.
 - b. Vibrations, waves, jerks, rotations; synchronized or alternate.
6. Second leg motions.
 - a. Extension forward, to rub second tarsus against first.
 - b. Elevation to form portion of fan-type display.
7. Third and fourth leg motions: Elevation and extension to various degrees, sometimes forming part of fan-type display involving all legs.
8. Abdominal motions.
 - a. Depression, when carapace is raised.
 - b. Twitching or vibration; vertical or horizontal.
 - c. Twisting or bending to side.
 - d. Elevation.



TEXT-FIG. 1. Examples of display motions in salticid spiders. A-F, Subfamily Plexippinae; G, Magoninae; H, Synagelinae; I, Dendryphantinae. A, *Corythalia xanthopa*, threat; B, C, same, courtship; D, *C. chalcea*, threat (dotted lines indicate peak position of legs during courtship); E, *C. fulgipedia*, threat; F, same, courtship; G, *Mago denticelalis*, courtship; H, *Gertschia noxiosa*, courtship (from Connecticut, U. S. A.; similar to that of the Venezuelan genus *Semorina*); I, *Ashtabula furcillata*, courtship. H, after Kaston, 1948; others reprinted from Parts I and III.

7. The great range of development of threat display within this single family does not appear to have been recognized, since the days of the Peckhams' scattered remarks on the subject.

D. PROGNOSIS OF EVOLUTIONARY PATTERN.

In order to bring into perspective the material in the following pages, it is necessary to anticipate some of the conclusions reached not only in this paper but in future sections of the series on post-embryology and general evolutionary trends.

1. *Correlation of Jumping with Sensory Development.* The genera studied at Rancho Grande showed great variety in the frequency of jumping in the course of normal, unexcited progress. Taking into consideration their behavior in other fields, notably display, it seems certain that this variety is based on differences in the dependence on various senses. In some forms more dependence is placed on chemical senses and less on vision. Evidence is presented later showing that these chemical senses include both chemotaxis and a distance chemoperception appearing very similar in its operation to the vertebrate sense of smell. In other forms, vision seems both more acute and more farsighted, while the chemical senses are relegated to relative unimportance. Experiments have not yet been performed at Rancho Grande on variations in visual acuity, al-

though several experimenters, notably Hermann (1928) and Heil (1936), present modern data on visual perceptions in species of the subfamilies Marpissinae and Hyllinae.

A few minutes' observation of unconfined salticids of selected genera will, I think, give convincing empiric support of the hypothesis. For example, in *Ashtabula* the progress is "a scurrying run, the first legs held flat and low, straight in front of the body; both they and the palps palpate the surface almost constantly during progress. During pauses the first legs are usually elevated, and they and the palps jerked rapidly up and down." (Part III, 1949, p. 41). These "runners," as salticids of similar habits will be called, never resort to hopping or jumping except in crossing gaps in the surface and in the final stages of prey capture. In contrast to other kinds, they are more easily observed in glass-covered dishes than when permitted to run freely on a table (cf. Part II, p. 143). Their comparatively poor vision and their dependence on chemotaxis, or near-chemotaxis, make their exploration of a new environment a highly "restless" and "nervous"-appearing proceeding, as they race to and fro.

In strong contrast is the behavior of an almost completely vision-dependent salticid, such as a *Corythalia*. When allowed to drop on an unfamiliar surface, he tends to pivot almost where he is placed while he looks all around; finally he moves off, without haste or

best developed are those farthest from the primitive stock. This hypothesis is supported by evidence from a number of other fields, although the pattern of specialization, as shown even in these few present-day genera, is far from a simple "family tree." As in all other groups, salticids having many primitive characteristics may be extremely specialized in a few directions.

Briefly summarized, the hypothetical pattern may be stated as follows:

The evidence in regard to salticid evolution—based on post-embryology, external morphology, ornamentation, locomotion, general habits and epigamic display—all points to a radiative type of development. Many forms with primitive characteristics still survive. Each subfamily so far studied in any detail includes genera ranging through at least two stages (Text-fig. 2).

The first, most primitive stage includes species with low carapaces (Text-fig. 3), low visual acuity, high dependence on chemotactic stimuli, locomotion of the running type, courtship simple and threat display absent.

The second stage is characterized by intermediate carapaces, visual acuity, hopping proficiency and courtship development; by depending on distance chemoperception rather than on chemotaxis; and, especially, by the presence of threat display which is based on the mistaking of males for females, and is undifferentiated from courtship except that it often ends in true fighting.

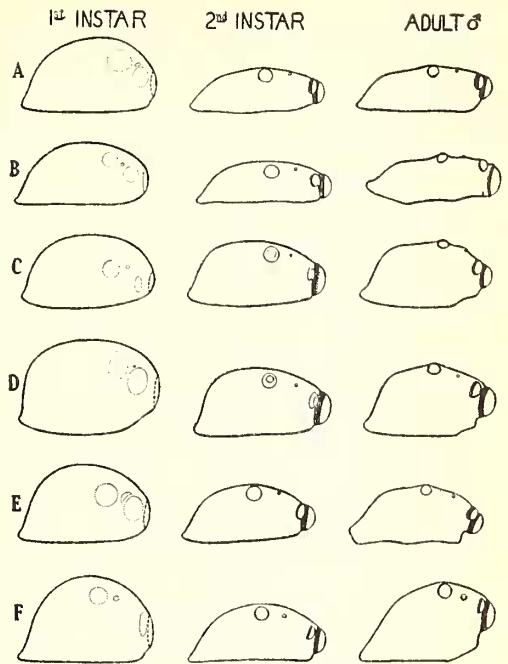
The third and most specialized stage is represented by species with high carapaces, extreme visual acuity, chemical perceptions of minimized importance, locomotion consisting principally of hops, courtship often complex but sometimes secondarily simplified, and threat display separate from courtship and altogether ritualistic.

I realize keenly the extremely small number of forms investigated at Rancho Grande in relation to the large size of the family. However, published records, in so far as they can be analyzed from modern points-of-view, and my own sporadic observations in other localities, appear to lend support to the hypothesis. It seems that the basic framework will prove to have validity.

V. FACTORS IN DISPLAY.

The releasing and directive mechanisms of salticid display have proved much more varied and their interrelationships more complex than was expected. Although all epigamic display is fundamentally visual in this family, chemoperception is important in certain phases; simple adulthood is not the only physiological essential for performing or responding to display; vision itself must be divided into perceptions of motion, distance, size, form, intensity, pattern and color for an approach to understanding display stimuli.

In the following pages an attempt is made to isolate and evaluate these factors, giving



TEXT-FIG. 3. Change of carapace proportions with growth in representative genera of salticids. Left column, 1st instar; center column, 2nd instar; right column, adult male. **A**, *Menemerus bivittatus*; **B**, *Semorina megachelyne*; **C**, *Salsacus flavicinctus*; **D**, *Mago denticheleis*; **E**, *Phiale flammea*; **F**, *Corythalia chalcona*.

in each case a summary of the observations and experimental results upon which the conclusions are based. Because of space limitations, it is impossible to publish full details of field and laboratory data; however, descriptions of especially illustrative observations and experiments are quoted now and then directly from the original notes. Laboratory procedures have already been described (Part II, 1948.2). Reference to Text-fig. 6 will help clarify the relationships of display elements during the course of this analysis; in the subsequent section on innate releasing mechanisms, beginning on p. 199, these factors are viewed as closely integrated, mutually dependent series of stimuli activating, controlling and directing both courtship and threat.

A. FACTORS OF THE INTERNAL RELEASING MECHANISM.

1. *Age*. In general, no sexual interest appears between the sexes until both are adult. Exceptions occur when a mature male in a particularly responsive state briefly courts a pre-adult female of similar appearance to the adult; such displays never pass beyond Stage I. A number of workers have reported behavior of this kind and I have seen it in various genera, always of the hopper type, especially in *Corythalia*. Very rarely juvenile individuals perform abortive displays; examples will be given below.

The Peckhams (1889, p. 50) recorded the interesting case of *Philaeus militaris* (= *Paraphidippus marginatus*) in which the adult males actually kept guard over individual preadult females until they molted. The nearest approach to this seen at Rancho Grande was the behavior of a single male *C. fulgipedia*. He was captured clinging to the outside of a cocoon, within which a female was molting to the adult instar. He did not even wait for her to dry and harden, but raced through the briefest display as she emerged, and mated. She was still soft and weak, and gave no resistance or apparent response at all. The eggs appeared on schedule, some two months later, and were fertile. This was an exception to the general behavior pattern of the genus.

Similarly, mature males rarely display to juvenile males except in reinforced experimental situations.

During experiments on display sign stimuli with *C. xanthopa* and *C. chalcea*, several cases of display behavior were noted in immature individuals of both sexes. They were exceptions, however, to the rule. Once a preadult (6th instar) male *chalcea* leapt repeatedly on a dead, mounted adult male, when the latter was appropriately moved. He then gave a medium complete threat display, through the fan stage with stiffened palps, following this with a Stage I courtship, and ending with a clumsy attempt to mate, approaching atypically from the rear. When a normal adult male was presented to him, without a rest period, the young one at once gave a complete threat display; when the adult responded in kind, the other retreated. When a preadult female was presented to the young one, she attacked him, whereupon he retreated, turned and courted briefly, Stage I. This sequence with the female happened four times, she charging him each time.

A single case of display in a 5th (pre-pre-adult) instar *chalcea* was recorded. This individual did a moderately complete threat display (through the arch phase) to two different adult males, punctuating them with retreats. One of the adults responded with threat. There was no courting or other reaction to females.

Preadult females of both *xanthopa* and *chalcea* gave incipient threat displays on a number of occasions, to adult displaying males, alternating the rudimentary fan-pose with the usual abortive attacks and retreats. In each case, it was clearly rudimentary threat, not courtship. These motions were never made in the presence of potential prey or predators, even of similar size.

Display is usually delayed, however, even after the final molt has taken place. *Corythalia* males normally do not display to each other or to a female until at least two days thereafter. One exceptional *xanthopa* did his first threat displays on the third and sixth days, but did not court at all until the seventh and then only a rudimentary Stage I; full threat and courtship were not attained until

the tenth day. Although freshly molted females are both attractive and receptive, they normally do not emerge from their cocoons for two or three days. Judging by the responses of males, female *xanthopa* do not attain their maximum attractiveness until about the fifth day.

The age at which males and females lose interest in display varies with the species. After two months in the adult stage, unmated *C. fulgipedia* males usually cease to initiate display in threat or courtship, and do not respond to threats of other males. However, one example, reared from the egg, three months after the final molt briefly courted an aged female who had completed molting more than six months before. Unmated males of *C. xanthopa* are in their adult prime less than a month; for several weeks thereafter they may respond to stimulus situations which are both complete and reinforced, but never to the extent of carrying a courtship beyond Stage I. An exception was a 32-day-adult male which mated with a 33-day-adult female, after a courtship of 13 minutes; the usual courting period for the species is three to five minutes. Their healthy brood was reared through several instars.

Unmated females of *fulgipedia* remain attractive to males and will accept them at least four months after the final molt, even though they have, at the usual time (about two months after molting), started laying the customary successive clutches of eggs. Females of *xanthopa* start losing both their responsiveness to display and their attractiveness after about three weeks, although the eggs in this species are not laid until about the fortieth day after molting.

No Rancho Grande female, in spite of repeated attempts on a number of well-distributed genera, was ever found to mate more than once, when more than a few hours had intervened; usually, also, she lost most of her attractiveness. However, there are a number of recorded northern observations of repeated salticid matings by both males and females (e.g., Peckham, 1889, p. 38). Rancho Grande males, as in the north, copulated readily at least several times in *Corythalia*, *Phiale* and *Menemerus*; other genera were not investigated, nor were such aspects as the duration of fertility and the effect of copulation on subsequent display initiation and duration.

2. Fluctuating Epigamic Rhythm. Not only is the period of display and acceptance at Rancho Grande limited to moderately young adults of both sexes and to unmated females, but there is also a definite fluctuation in both sexes from day to day in sexual aggressiveness and receptivity. Such fluctuations are of course well known, and are in fact the rule in higher vertebrates. Hints of it have also been detected in fiddler crabs (Crane, 1941, p. 153 ff.), but it does not seem to have been much investigated in invertebrates.

In all salticids under special observation at Rancho Grande, it was noted repeatedly that young, vigorous adults of either sex varied daily in behavior. Those which were particularly lively in display or responsiveness on one day might, on the next, be altogether unresponsive to sexual situations, although their general health and activity seemed unimpaired. These individuals had not been allowed to mate on the preceding day, nor had there been a break in the feeding routine, or noticeable changes in other conditions such as moisture or general weather. A day or more later, they might recover all their previous epigamic energy.

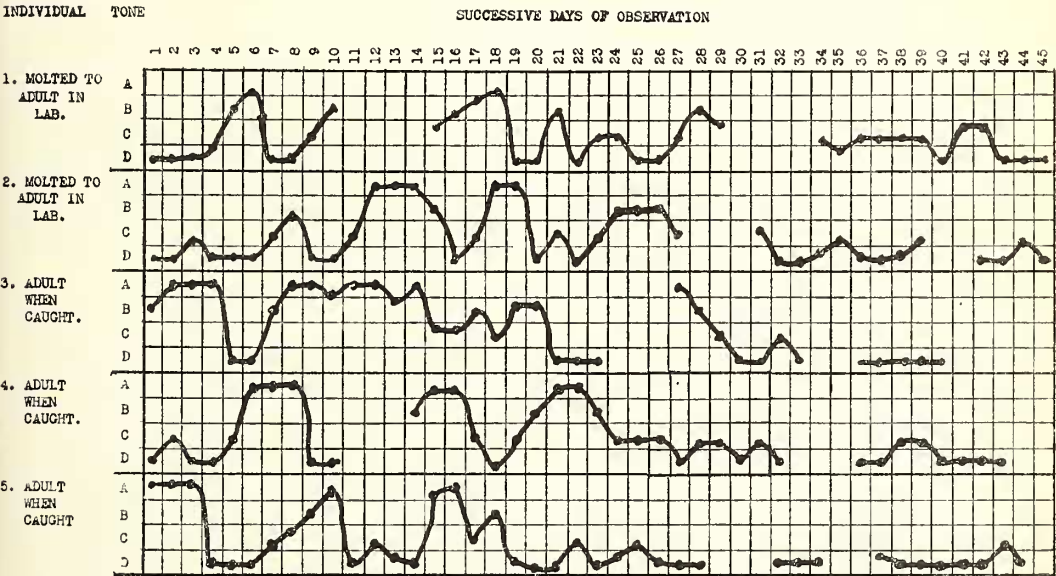
This phenomenon was specially investigated in more than twenty adult *Corythalia xanthopa* males of varying ages. About half of them passed the final molt in the laboratory, so that their exact length of adulthood was known. None of this group was allowed to mate. All were kept under conditions as similar as possible, although all twenty were not observed simultaneously, but in small, overlapping groups. All were tested for various periods up to 43 days with stimuli of such proven efficacy that they came to be termed "standard stimuli" for the species. They consisted of a particular, normal male, dried and mounted in semi-threat stance (see p. 169), a mirror image, young and older adult females, and live normal males.

In the case of low-threshold males, various unnatural or incomplete stimuli were also presented. The mounted specimens and mirror were each presented in a series of up to a dozen successive jerking approaches to the tested male, after his attention had been

caught by the stimulus. The quickness of response (if any) was taken into account when determining his sexual tone, because, obviously, a stimulus which drew a response only on repetition was reinforced by summation. Again, the "startle" element of repeated presentations of the same stimulus in quick succession, rather than continuously, was important in drawing responses from low-tone individuals; hence all hand-controlled stimuli, for the sake of uniformity, were presented in this fashion: the mount or mirror was lifted high in the air for an instant after each approach to the spider. The working of the law of heterogeneous summation (Tinbergen, 1948, p. 35) was minimized by always working with a group in every test period; each individual could thus be tested with one stimulus followed by a rest, yet with a minimum wastage of experimental time. The same general rules were followed in all salticid testing (see also, Part II, p. 143).

In the course of the work, the fluctuating internal drive appeared divisible into four major degrees of sexual tone, with the following characteristics:

A-Tone. Internal drive strong, that is, male with low epigamic threshold. Only minimal stimulus needed for maximal response, which follows promptly and appropriately to all normal stimuli and to many deficient stimulus situations as well. Display follows through swiftly into Stage II in courting receptive young females; old females courted with considerable persistence. Responses continued during a prolonged test-period. No "vacuum responses," however, have ever



TEXT-FIG. 4. Daily fluctuation of epigamic threshold in five male *Corythalia xanthopa*. Spiders of A tone are most responsive to epigamic stimuli, those of D tone unresponsive. The tone was determined by the individual's response to three standard stimuli: his own mirror image, a particular dead male mounted in a semi-threat position, and a young, living female. See p. 177. Blanks in the graphs indicate days when observations were not made.

been observed, in this or any other salticid; that is, no display is performed without some external stimulation.

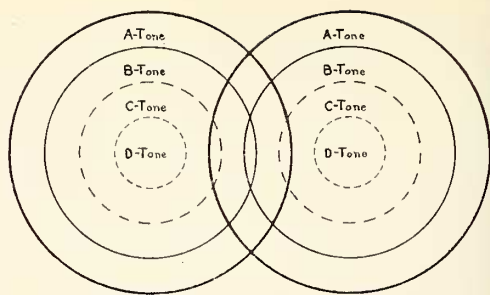
B-Tone. Internal drive moderate, the epigamic threshold being moderately low. Maximal stimulus needed for normal response; either threat or courtship or both may be elicited, but only through summation, though display is eventually complete. Courtship of a young female may be energetically performed throughout its entire course, but older females attract little or no attention. All courtships are likely to die out in the middle, when the male, instead of following up the female during her normal, periodic retreats, simply circles around her previous resting place, palpating the ground in the manner of less specialized, runner-type salticids. Again, the male sometimes gives atypical responses, leaping briefly at the threat stimulus before performing threat display, or even courting it; equally briefly and rarely, he may threaten a female. He may or may not respond to one or two slightly incomplete stimulus situations. Invariably ceases to respond in a test period after relatively few stimuli have been presented.

C-Tone. Internal drive weak, the epigamic threshold being moderately high. Maximal stimulus needed for minimal response. Male responds either to normal threat or normal courtship stimuli, but not both; summative threat stimuli more often draw a response even than young females. No courtship is ever followed through to completion, and the palpating of the female's resting place is pronounced, the male spending much of his attention on one of her former positions, even though she is at the moment sitting in full view, and facing him, only an inch away. Leaping at threat stimuli is frequent and, unlike the case in B-tone spiders, is rarely followed by the normal response. Incomplete stimulus situations attract no attention, except, sometimes, brief notice followed by escape behavior. The attention of C-tone spiders is difficult to attract and hold, they often move about in "restless" fashion, and always stop responding quickly, often after only one or two stimuli have been presented.

D-Tone. Internal drive imperceptible, the epigamic threshold being very high. Male does not respond with display to stimuli of any kind, although other daily activities, such as feeding and moving about, are unimpaired.

The above four states naturally merge into one another, and in recording the daily changes of tone, it was found convenient to recognize plus and minus degrees. For example, a spider which did not display, but nevertheless showed enough interest to follow a jerked mount or a young female with his eyes (through the twisting of his carapace), was counted D-plus.

Typical examples of daily fluctuations are shown in Text-fig. 4. Text-fig. 5 diagrams the degree of influence on each other of spiders of various tones.



TEXT-FIG. 5. Diagram showing mutual influence of salticids of various epigamic tones. For example, even an A-tone spider never draws a display response from one of D tone, although he himself displays readily toward individuals of any tone and either sex; B- or C-tone spiders may respond to the displays of an individual of higher tone, but rarely initiate it themselves. The boundaries between tones should not be regarded as hard and fast lines. See pp. 176-179. In salticids, courtships are rarely completed in the field, or threat displays energetically prosecuted, except by spiders of A tone, that is, of the lowest epigamic threshold. This is in contrast to the condition in some vertebrates, where the behavior of a correspondingly low-threshold individual is not regarded as typical (cf. Part II, 1948.2, p. 143, and Tinbergen, 1948, p. 39).

The one result that emerged clearly from the records was the complete lack of a definite rhythm in *xanthopa*. In general, however, individuals in their prime remained from one to four days in A-tone, then dropped within 24 hours to C or D; they remained at these high-threshold levels from one to three days, and then climbed back to B-plus or A in about 48 hours. Some spiders attained A-tone only once in the course of their four weeks of prime, the rest of their top display levels being B's, with prolonged C and D stretches between. A rarely active male, caught adult, had three A-periods of three, four and one day each, during a period of two weeks, with only one day of D intervening; the subsequent portion of his active display prime tapered off in irregularly alternating B's and C's of one to three days each.

Just-molted males start at D, paying no attention whatever to epigamic stimuli during at least the first two days; they then climb, gradually or abruptly, to their first B or A period, which may come at any time from the third day to the tenth. After about the 28th day, display responses taper off, fluctuating gently between C's and D's. Often they flow along for four or five days on about a C-minus level, responding, for example, one day to a single, summative threat stimulus situation, and the next with a series of leaps only to the same stimulus, but with the addition of a few abortive rocks to a young female.

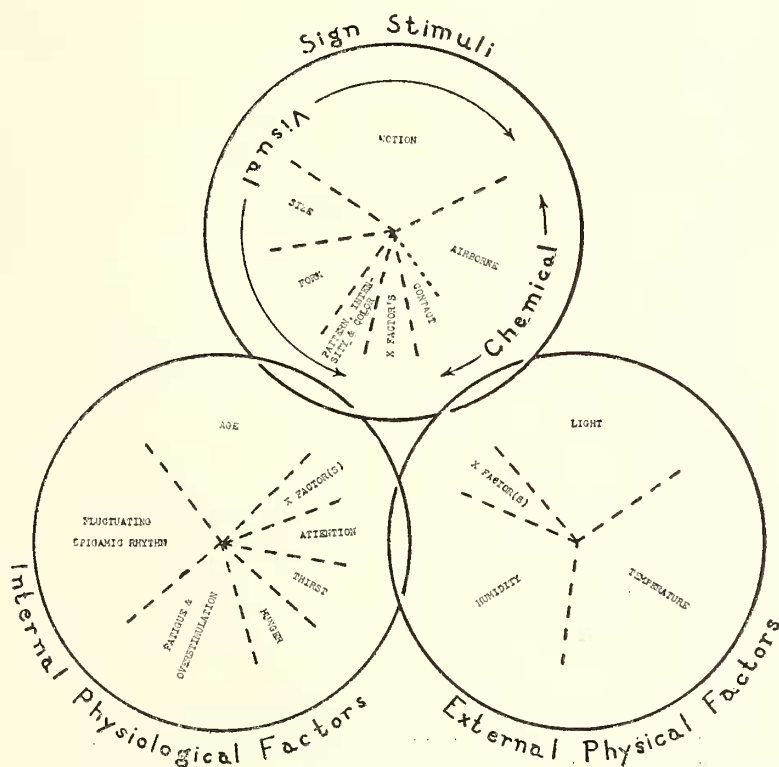
That the above phenomena are not the results of laboratory conditions is proved by the fact that a number of males were tested

in the field, before capture, and their behavior was found to correspond to that immediately afterwards in the laboratory; also, these and other males were taken, as adults, in all four phases, some young, judging by their future plotted curves, some old. Their behavior curves differed in no wise from those of males reared through at least one molt in the laboratory, except that in general the wild-caught adults tended to hit and hold A-tone oftener and longer.

Although males of other genera and species were not tested systematically, there is no doubt but that they do have periods similar to those of *xanthopa*. Females, too, show noticeable behavior fluctuations, both in general aggressiveness and in reciprocal display, although their periods were not studied. One *C. chalcea*, for example, was especially

prone during several days to do a particular type of jiggling in mutual display; I never saw it in another of her species, and it soon dropped from her usual behavior, reappearing only sporadically. Although she was exposed to the display of a number of males during and after this time, she was not allowed to mate for another two weeks, when the process went off perfectly normally.

3. *Hunger and Thirst*. Hunger, as might be expected, was an important factor in the behavior of females, since a hungry female was usually far more aggressive and needed far longer courting than one which was well-fed. However, in no genus except *Eustiromastix* have I ever seen a female try seriously to kill a male, although occasionally she will leap at him. Moderate hunger in males lowers their epigamic tone only



TEXT-FIG. 6. Factors of the innate releasing mechanism in salticid display. The circles are represented as loosely interlocking to indicate the interdependence of the three groups of factors. Similarly, the spokes are not continued to the circumference in order to show the mutual influence of the sections. Finally, the spokes are represented as broken lines, to emphasize the variability and instability of their relative importance; this varies not only throughout the family, but even in the same spider under different conditions. For example, among the Synagelinae, the chemical factors are more important than among the Plexippinae, while the same sections are of still different relative value in the end-forms of the Dendryphantinae. The sizes of the sections, therefore, are merely a guide to their average apparent importance within the family. The term "X-factor(s)" is included in each circle to emphasize the incomplete state of our knowledge. "Distance" is omitted from among the sign stimuli since it seems to be more of a compound factor in display than do the others, based largely on apparent size, on chemical stimuli or their absence, and on physiological conditions; perception of distance and depth does exist however (see Homann, 1928; Heil, 1936). Tactile factors are omitted since they do not release display in salticids, although they are important in the final display stages. The sign stimuli circle applies to courtship; for threat display, the chemical factors should be eliminated.

slightly—from B-minus to C-plus, for example. In all the experimental work, no spiders were tested without having been fed at most 48 hours previously.

Thirst cannot of course properly be separated from the external factor of humidity, although spiders do drink water as needed. Salticids that for some days had been kept without special moisture in the laboratory went into silk shelters, if they did not die first, became semi-torpid and did not react to display stimuli; this behavior is doubtless equivalent to aestivation in the field.

4. *Fatigue and Overstimulation.* These two factors have not been properly distinguished. Actual physical fatigue, however, sometimes appeared clearly involved during experiments. Often initially restless individuals, even of hopper-type genera, were tested which raced about the table before settling down to attending to stimuli; they often had even to be pursued to the floor; afterwards, even when otherwise of A- or B-tone, they always reacted to stimuli for a shorter length of time than those which responded without preliminary activity. On the other hand, overstimulation appears to be a better term for the cessation of reaction that takes place in spiders at the peak of their internal drive, when they have had practically no exercise but have been presented with a succession of stimuli. In every individual the moment is reached, as in other animals, when no further response is drawn, no matter what the stimulus. The length of reaction time is highly variable; *C. xanthopa* is, however, as typical as any: A-tone males may be tested for around half an hour with only minimum pauses between stimuli (about three minutes). When a large group is used (the customary experimental procedure) responses may spread over three or four hours, the long rotation period allowing individual rests of 10 to 30 minutes between stimuli presentations. An individual which is tested in the morning to the point of complete non-response is usually again responsive by mid-afternoon; full recovery (regardless, that is, of internal drive changes) is the rule by the next day. Spiders with low internal drive, e.g., of C-tone, have extremely short response periods, usually totaling only five or ten minutes; often there is only a single response, regardless of length of rest between stimuli.

5. *Attention.* This factor is quite distinct from the others, and a *sine quo non* of display. Although spiders with strong drive undeniably are more easy to stimulate with display situations than weak-drive individuals, all vary irrespective of sexual tone in the amount of time needed to attract their attention to a stimulus. Sometimes they are so restless when first put on the table that their only motive appears to be to get somewhere else; some minutes pass before they seem suddenly to "wake up" with an almost literal jerk and "notice" the stimulus, which may have been equally close in front of them

many times before. This applies to both threat and courtship stimuli. The same is true of a spider engaged with one display stimulus, or with food, when another and, at the moment stronger, situation is presented.

B. FACTORS OF THE EXTERNAL RELEASING AND DIRECTIVE MECHANISM.

1. *Physical Environment.* The effect of the physical environment has not been precisely analyzed in regard to exact tolerances and requirements of temperature, humidity, light and altitude. However, the following facts have been determined:

Corythalia xanthopa in the Rancho Grande laboratory displayed readily at temperatures between 65° and 80° Fahr., the extremes tested. As has been noted by others, responses were somewhat accelerated at the higher temperatures. The humidity varied from 50 to 95 per cent. The same species displayed at Weston photometer readings as low as 0.8 foot candles; below that there was no response. During regular experimental sessions, reflected daylight from the laboratory table ranged from about 25 to 75 foot candles, Weston; these readings were comparable to those obtained in *xanthopa's* natural habitat during periods of high activity. *Menemerus*, with apparently poorer vision, seemed to need considerably more light, but no accurate measurements were taken.

Corythalia fulgipedia, *C. chalcea*, *Eustromastix* and *Phiale flammea*, although captured at 3,500 feet, all displayed at sea level in New York, having been brought there alive in the early instars. They displayed upon reaching maturity regardless of the month, of the highly variable and unnatural extremes of temperature and humidity in which they had been reared, and of the lower altitude.

Displaying individuals of most species could be found at Rancho Grande from February to September, the period of our residences, which includes most of the dry season and half of the wet. However, as in other groups, most species had a clear peak of breeding adults in May, June and July, the early part of the rainy season.

Both in Venezuela and in New York, spiders displayed under extremely unnatural conditions, with no time whatever needed for adjustment, short of their being literally frozen, deeply chloroformed, dried out or far overheated. That is, if the spider were not injured physically beyond recovery, if he remained capable of primary activities—moving freely, catching prey and spinning a shelter—he could and did display when in a period of moderate or strong drive and when properly stimulated. All salticids observed displayed as readily in a glass container or on a table top as in their own forest environment, and in every case the pattern of display behavior in captivity was identical with that recorded in the field. The only exception was that, rarely, captive

Corythalia males, in close quarters under hot lights, occasionally injured each other in actual fights; ordinarily, aggressive behavior was confined to highly ritualized threat display.

In the field, salticids invariably disappeared under leaves and therefore presumably did not display, both during every shower beyond a drizzle and during all hours of intense heat, drought or baking sunlight. Display during the night in the laboratory was successfully stimulated in A- or B-tone *Corythalia* and *Phiale* which were forced out of their shelters and provided with adequate light. Hence an innate diurnal rhythm does not appear to exist in these forms.

In brief, the only external physical requirements for display appear to be tolerable conditions of temperature and humidity, along with adequate light (sun, photoflood or mazda). In *Corythalia* at least, this illumination is less than that sufficient for comfortable reading by a human being.

2. *Sensory Elements and Sign Stimuli.* The sign stimuli (or perceptual signs) considered here are those external signals which are involved in releasing or directing epigamic display in salticids. They are unexpectedly complex, especially in courtship, in which they customarily involve compound tactile, chemoperceptual and visual stimuli. Of them all, only two or three combinations of a few visual stimulus-elements can be termed primary releasers, since no salticid displayed at Rancho Grande unless the antero-medial eyes were photopically stimulated.

Reference to Table II and Text-fig. 2 will be helpful in maintaining orientation in regard to the various displays and the presumed degree of specialization of species discussed.

a. *Tactile Perceptions.* Although in many web-spinning spiders tactile perceptions are of great importance in courtship, in salticids their role is confined to advanced Stage II, where the stimuli are probably mingled with chemotactic stimuli. They will be discussed together on p. 182.

b. *Chemoperception.* For many years a possible "sense of smell," as earlier observers called it, in spiders has been the subject of extended experiment and considerable controversy. In their studies of courtship in various spiders, modern workers, particularly Kaston (1936) and Bristowe (1941), have drawn necessary and precise distinctions between contact chemoperception and distance chemoperception.

In contact chemoperception, conveniently called chemotaxis, the spider must actually touch the female herself, her silk or exuviae, or at least her trail, in order to receive a sensory chemical impression. This sense, both authors agree, often enters into spider courtship, although it is not always essential for the stimulation of display, and, in their experiments, was not necessary in salticids.

The Rancho Grande results were in agreement with these conclusions.

On the other hand, in courtship stimuli involving distance chemoperception, a spider would have to react to volatile, airborne particles given off by a female, her silk or exuviae, or her trail. Such stimuli have not been found by these authors to take any part in stimulating courtship display in any spiders which they have studied, nor do they consider that evidence has yet been brought forward which necessitates the operation of such a sense in spider courtship. Here the Rancho Grande results differ; it seems necessary to postulate the use as a secondary sign stimulus in courtship of a sense analogous to smell.

The two aspects of chemoperception—contact and distance—will now be considered in reference to the Rancho Grande salticids.

i. *Chemotaxis.* In some other groups of spiders, all with vision less well developed than in salticids, chemotaxis is a primary releaser of courtship, with or without sight of the female. In salticids this is certainly not the case. Kaston, reexamining the situation in 1936 (pp. 129-130), concluded that it was not essential in two species of *Phidippus*, and Bristowe (1941 *et ante*) agreed. Similarly, at Rancho Grande, when chemotaxis was positively eliminated from the stimulus situation, in every genus tested A-tone males displayed without chemotaxis. Contrariwise, no individual ever displayed on the stimulus of chemotaxis alone, although excitement over chemotactic stimuli was often shown. The tested forms were the following: *Menemerus*, *Semorina brachychelyne*, *Ashtabula*, *Sassacus* (2 spp.), *Phiale* (2 spp.), *Plexippus* and *Corythalia* (3 spp.).

However, in all of the numerous observations and experiments, variations were very obvious in the minor exercise of chemotaxis. These were present on all levels—generic, specific and individual. When chemotaxis was allowed, the initiation of display in all the runner genera (*Menemerus*, *Semorina*, *Ashtabula*) was definitely expedited, although that of the hopper and intermediate forms (e. g., *Corythalia*, *Phiale*) was apparently not affected in the case of A-tone spiders. However, many individuals in all genera, when of B-tone, initiated display only when chemotaxis was included in the stimulus situation.

Salticids of all conditions, except those of D-tone, and in all genera, but particularly among the runners, often paid great attention to the recent resting places of females, tapping them with palps and forelegs and revolving round and round the area. All B-tone or tiring spiders tended to break off display and palpate at length her just-vacated resting spot even as the aroused female sat and watched only an inch or two away; sometimes, absorbed in these palpations, a male allowed a prospective mate to wander completely out of sight; this reaction was noted

most frequently in the hopper genus *Corythalia*.

In the runners there was more of a tendency to follow a trail, by intermittent palpation of the ground, over which the female had passed. In *Sassacus ocellatus*, *Phiale* and *Corythalia*, there were no tendencies to trail-following chemotaxis at all; once a female had attracted his attention, a male often followed her zigzag or curving retreat by taking the most efficient short-cuts, whether or not display had been initiated.

The latter half of Stage II is so similar and well known throughout the family that it will not be specially treated here. It begins with the male climbing over the female, patting her carapace with palps and first legs, and follows through to the twisting of the abdomen and successive insertion of the palps into the epigynum, usually after some palpation of its surface. Here it will only be pointed out that chemotactic as well as purely tactile perceptions are probably involved.

Chemotactic perceptions are also not necessarily eliminated from the stimuli which continue to lower the female's threshold during the same period. Her final resistance is probably broken down by the stimulating action of the patting motions; however, since her chemotactic receptors appear to be scattered over her entire body, as well as concentrated on the appendages (Kaston, 1936 & ref.), they very likely are stimulated at this time.

Except in the advanced stage noted above, chemotaxis certainly plays no important part in the acceptance of a male by a female. Since she usually retreats a number of times during normal courtship, she infrequently crosses a male's trail during display in the field. It is true that some individual males have a tendency to circle the female completely during display. Also, females of *Phiale* and *Menemerus* have often been seen to palpate a male's recent resting place, while he is still displaying. Nevertheless, on open table tops in more than 20 experimental situations and in uncounted casual observations, involving all the experimental genera, males were accepted without the females once crossing their trail.

I can find no evidence whatever that chemotaxis plays any part in inter-male display; I have never seen a male palpate the surface or show apparent excitement of any kind when placed on the spot recently vacated by another male, even when both have been or are displaying to each other. However, a male *Menemerus*, a typical runner, could be induced to display to his mirror image only by corking him in a clean glass vial and holding the mirror against the glass end. After a few minutes, display sometimes took place in A-tone individuals, each presumably activated by his own strongly reinforced chemical stimuli. This experiment was performed on six different males; the display was indistinguishable from Stage I of

courtship and was always of very brief duration.

The occasional males in various genera that enter upon Stage II of threat, when the first legs of each opponent touch, practically always finish the encounter at this point with no damage done to either. The fangs are very rarely unsheathed during these moments. Chemotaxis, or, rather, the absence of the female chemotactic stimulus, may be involved here.

ii. *Distance Chemoperception*. The apparent part played in display by a sense analogous to olfaction will now be discussed. The majority of previous experiments concerned with it have dealt with the reactions of spiders to essential oils, chiefly of an apparently irritating nature. It has been pointed out several times (e.g., Kaston, 1936, p. 146) that sensitivity to these stimuli does not necessarily indicate possession of a true olfactory sense. Such a sense has, however, been proved to occur in a number of terrestrial invertebrates, including moths, beetles and bees. The only aspect directly concerned in the present display study is the part, if any, taken by a sense analogous to odor perception.

If such a sense exists, the necessary affectors do not, of course, necessarily consist of volatile particles; they need only be airborne and, presumably, invisible to human eyes. It is regrettable but natural that we human beings, as visually dominated organisms, should tend to be impressed with and to study chiefly visually or at least aurally dominated displays in animals. Moths and other nocturnal creatures, both vertebrate and invertebrate, may, for all we know, give off in epigamic display regular symphonies of smells in a rhythmic succession. More difficult to imagine, but perhaps easier to check, is the following possibility: Females of certain animals, at the peak of physiological readiness, may actually radiate certain wavelengths invisible to us. These may be either infrared or ultraviolet, using those terms in their broadest sense. An alternative possibility is that these frequencies may be reflected rather than radiated. The emission, of whichever type, would doubtless be under hormonal control, and would have some signal values for males. It would not necessarily of course be perceived visually. In that connection may be mentioned the old, recurrent speculations on possible wave-perceptive functions of insect antennae. The claims of some investigators that blind-folded human beings respond muscularly to red light is another related topic (See Birren, 1938, ref.).

Toward the proof or disproof of the possibility of such emissions, not one jot of experimental proof is offered here. The subject is mentioned only because of its potential connection with salticid display, and in the hope of stimulating investigation. If found valid, it would explain one or more aspects of

animal display which at present are inexplicable. The proving of the perception of special frequencies would solve puzzles in certain fiddler crabs and birds, for example. In each of these cases, males appear instantly to distinguish receptive females of their own kind from non-receptive ones in some fashion which does not appear to depend either on her behavior or on her emission of any recognized sensory signal (see Beebe, 1928, p. 64; Crane, 1941, p. 157; and Armstrong, 1947, p. 340 & ref.).

It is true that the operation of scent has not yet been eliminated under experimental conditions in the above instances. Since the published work on crabs, however, many field examples have been seen where the particularly stimulating female crab was several yards to leeward in a stiff wind; the poor olfactory development in birds is well known. According to Kettlewell (1946), however, moths have not yet been proved ever to approach females with the wind, the contrary evidence of earlier experiments having been due to incomplete observations.

In view of its highly controversial aspect, therefore, this present speculation may be on the order of postulating improbable sunken continents in order to explain an inconvenient distribution of fauna, flora or culture. Nevertheless, it is set down in the hope that adequate instruments will soon be developed capable of testing the possibility. Proofs of the use of supersonic signals by bats (Hartridge, 1945) and the perception of polarization of light by bees (von Frisch, 1949; Thorpe, 1949) are suggestive recent results of research in unusual directions. In our own future researches and experiments we certainly intend to take such possibilities into account.

In regard to salticid spiders, however, it seems that the phenomena described below can be most simply and adequately explained by postulating the action of typical, airborne, volatile, chemical particles acting upon appropriate receptors. They will be so considered in this paper.

The work at Rancho Grande seems to point conclusively to the existence of such a chemical sense. It appears likely that it is merely a further development of chemotaxis, in that the effectors, and perhaps the receptors, are basically similar or identical. This sense plays an important secondary role in courtship.

The evidence for this conclusion is based chiefly on the following observation: Young, living, unmated, adult females at Rancho Grande were in general markedly more successful in drawing courtship display from males than were females in other categories.

Their superior attraction was noted in more than 25 species, in fact, in all material plentiful enough to yield comparative observations; these included all the Rancho Grande forms discussed in this paper. The Peckhams (1894, p. 251) attributed a similar observa-

tion to the fact that females about to lay eggs were so heavy that they tended to move about less, and that it was the lack of movement which made them relatively unattractive. In the basic experiments at Rancho Grande, this factor was eliminated by chloroforming the subjects. They were then presented alternately as motionless, or uniformly moving stimuli on L-mounts. Chemotaxis was ruled out as previously described (Part II, pp. 143 and 144). The males were allowed only front views on a plane surface, to avoid the visual variables of large vs. small abdomens, or fresh vs. rubbed patterns. The effects of summation were guarded against, as usual. For experimental purposes, a female was counted as "young" when she had been adult for less than two weeks, "old" when more than four.

The general results, in this and other genera, were as follows: A-tone males, when given a choice, almost always devoted their attention to a young female, although an old or mated individual was usually courted energetically if no other was available. B-tone and C-tone males, as well as all near-senile males, showed no courtship display response at all to any but young females. A-tone males often courted a young female which was chloroformed, placed on a mount and held motionless; males of the same tone rarely took any notice of an old or mated individual similarly presented. Dead, thoroughly dried females of all ages either drew no reaction when motionless, or, when appropriately moved, occasionally drew confused threat display. Finally, although certain paper models of *C. xanthopa* males successfully drew threat display, models of females were never successful.

Special test situations, involving *C. xanthopa*² and *Phiale*, gave the following results which are pertinent:

The abdomen of a young adult female *xanthopa* had been painted black for another experiment on the tenth day after her molt. After repeated intermittent chloroforming, she died about five o'clock one afternoon. At that time, when crumpled, motionless and of atypical coloring, she readily drew display from several males. Chemotaxis had, as usual, been eliminated from the test situation. By seven o'clock the next morning, although she was not yet stiff, she had lost attraction for three A-tone males to the extent that, although some attention was paid her when she was jerkily moved, no display whatever was drawn. The normally colored abdomen of a chloroformed female, adult for fourteen days, was then cut off from the cephalothorax

² The published description of *C. xanthopa* display (Part I, p. 36) erroneously states that rocking precedes threat as well as courtship; further observation showed that this occurred only in small, closed dishes involving strong reinforcement of chemical stimuli. Normally, rocking does not occur in threat display. See Table II, this paper, for synopsis of threat and courtship distinctions. Also, the threat display figured (i.e., Text-fig. 14 C) represents a moderate phase; in the extreme form the 4th legs are held even higher, well above the carapace, and the second tarsi leave the ground.

and placed on the mount 10 mm. from the dead female. Two males now displayed promptly to the black corpse, following through to attempted mating with it, disregarding completely the normally colored, detached abdomen.

The detached abdomen was then rubbed over a dried, mounted male, which had heretofore always drawn prompt threat display. It drew brief, confused display, with both threat and courting elements, from a male which had threatened it a few moments before, and threatened standard stimuli immediately after (without a rest period). During the test, however, he followed the confused display with a leap at the mount and finished with an abortive attempt to mate.

On another occasion, a male *xanthopa* was threatening a dried male mount. Another freshly detached abdomen of a young female was hidden under a tiny paper tent, 5 mm. to the left of the displaying male which in turn was 50 mm. from the mount. The male stopped threat display, went into a courtship stance and rocked. When the mount was removed, there was no further reaction.

A *xanthopa* male paid no attention to a scrap of black cloth alone on a mount, or to the same cloth with a young female underneath it, with or without motion of the mount. Then a large, dried *Eustiromastix* male was given a yellow clypeal band similar to that of *xanthopa*, and placed on another mount. This stimulus drew prompt threat display when the mount was moved. The piece of cloth was then placed in a heap under the *Eustiromastix*. Threat again followed. However, when the chloroformed female was once more hidden beneath the cloth and the whole placed under the *Eustiromastix*, the test male paid swift attention without display, then vibrated the palps, took a courtship stance, and, finally, after one or two rocks, leapt on top of the *Eustiromastix* and tried to mate with it. This involved such a violent attempt to twist the stiff abdomen that the whole structure toppled over. With a changed sequence of stimuli, the same series was presented to two other males, with similar results, except that the courtship response died out before mating attempts.

Young females of both *Corythalia* and *Phiale*, when painted to resemble males, drew unmixed courtship, not threat, although old painted females drew mixed display (p. 194).

When female epigyna of *Menemerus*, *Phiale* and *Corythalia*, in a total of six individuals, were sealed with paraffin, no diminution in attraction was noted; the attractive substances are probably secreted rather generally by body and appendages; the experiments of Kaston (1936) and others on non-salticids support this idea.

It should be mentioned incidentally that young adult females have a stronger odor to human noses than either males or older females, at least in *Menemerus* and all three species of *Corythalia*. In a series of tests on *Corythalia*, the odor of

young females was the only one perceptible to two of five observers; the other three people in every case considered the young female's odor strongest, but indistinguishable in quality from that of males or other females. The latter seemed stronger than the males'. No generic or specific differences were detected, during casual tests with various genera. The terms used in attempts to describe the salticid odors included "spicy," "pungent," and "faintly antiseptic."

Further incidental data, by no means to be regarded as actual evidence for distance chemoperception, include the different methods of using palps and first legs in the various genera (Table II). This seems to be in accord with the various degrees of reliance on contact and distance chemoperception.

The chemoreceptors (including those of chemotaxis and the distance chemoreceptors, whether or not they are distinct), have been shown to be generally distributed on the spider, but concentrated near the tips of the palpi and first legs (Kaston, 1936 and ref.). With this view the Rancho Grande experiments agree. Females without palps or without first legs readily accepted males in *Menemerus* and *Corythalia*. When both palps and first legs were removed, reaction time was slowed in *Menemerus* but not in *Corythalia*. Males similarly handicapped displayed right through to mating attempts. When use of the first legs was the essential part of display, spiders without them would suddenly leap at the female after a prolonged period of attention. This response was specially noted in *Menemerus*. Reaction time was decidedly slowed in handicapped males in initiating courtship, but not in responding to any of the threat stimuli, including the mirror and painted mounts. It was much slower in mutilated runners of the genus *Menemerus* than in the hopper genus *Corythalia*.

In summary, the following conclusions appear valid. At Rancho Grande, distance (airborne) chemoperception is a positive factor in courtship, but not in threat display. A strong, invisible stimulus is given off by young females, serves as a secondary sign stimulus for releasing courtship and is surpassed in importance only by the male's ability to use his antero-median eyes. It appears to have little directive value. When courtship and threat are distinct, the addition of airborne chemical stimuli from a young female to a stimulus configuration tends to change threat to courtship.

b. Vision.

i. *Vision as a primary stimulus to display.* Use of the AME (antero-median eyes) by the male is the only single, *sine qua non* of display. The investigators who have experimented with the reactions of blinded male salticids agree that they will not display when the eyes are completely covered, no matter what other stimuli (e.g., contact and airborne chemical stimuli) are present. Apparent excitement caused by other stimuli

has sometimes, however, been observed. The species previously tested are well distributed among a number of subfamilies: *Dendryphantas elegans*, *Saitis pulex*, *Phidippus rufus* and *Astia vittata* (Peckham, 1894, p. 248); *Evarcha blancardi* (Homann, 1928, p. 254); *Aelurillus v-insignatus* (Bristowe, 1929, p. 343); *Phidippus clarus*, *P. audax* (Kaston, 1936, p. 131). Homann confined some of his blinding experiments to the AME, finding that display failed to occur as completely as when spiders were totally blinded.

The present experiments support and extend these previous conclusions. Two males each of *Corythalia xanthopa*, *C. chalea* and *Menemerus bivittatus*, all of A-tone, were used. In one of each pair all eyes except the AME were painted, as described in Part II (1948.2, p. 144); in the other, only the AME were covered. After the spiders had apparently recovered from the chloroform (the minimum time allowance was one hour), standard test stimuli (p. 177) were presented on three successive days, unless a positive response was obtained earlier. Regardless of all-negative responses, the paint was then removed and, in tests counted as successful, positive responses obtained to at least one of the standard stimuli within one hour.

In each species, the males with the AME uncovered performed complete display (both threat and courtship, in the case of *Corythalia*) within the allotted period, although their reaction time in general appeared a little slowed. In contrast, those with the AME painted never displayed at all. The latter did, however, show some awareness of moving objects, including females, by shifts in position and slight "following" with the eyes at distances of half an inch or less. This note is typical: "X64 male sat quiet, although he ran and jumped when prodded. Took no notice of X34 female, as she watched him only one-half inch away; although she actually brushed against him several times, even his palps hung quiet. Later he moved off, crossing her trail and very recent resting place without pausing. Finally, when she jumped past him, he did turn toward her; the stimulus, however, could have been a vibration of her jump, rather than either a chemical or visual stimulus. Even in the same vial with her, with all her chemical stimuli reinforced, there was no reaction."

The most interesting result, from the viewpoint of phylogeny, was that *Menemerus*, which appears to depend more on chemotaxis and distance chemoperception and less on vision than *Corythalia*, was decidedly less handicapped by the loss of the AME. He moved around much more actively, and palpated the females' resting places in apparent excitement. No attempt was made by either genus to pursue prey without the use of the AME.

The AME of a single young female *C. xanthopa* were covered. Just before the operation she had allowed a male to reach an

advanced Stage II, when the pair was purposely separated. After painting, she refused him and four other actively displaying males which subsequently displayed to her, two or three in succession, on four successive days. One male, on the third day, reached Stage II repeatedly, "... but at the least touch, or before, she moved off. Male was very persistent. She did not turn to keep him in view; her palps hung motionless. Since he circled her time after time in displaying, as usual, she crossed his trail frequently during her retreats. She never once assumed the raised-carapace stance so many *xanthopa* females temporarily adopt when attention is gained. He persisted for twenty minutes, then gave up. I cleaned her eyes, introduced the same male within half an hour, and they were mating five minutes later." (Field lab. note.)

No other female blinding experiments were completed through the final stage of obtaining positive mating responses after the AME were uncovered. However, all the indirect evidence—in the observations of others and in my own—points to the usual necessity for the female to see the male before allowing mating to take place.

In summary, use of the AME, and of the AME only, is a prime requisite in salticid courtship.

ii. *Motion*. It seems well established that at least some salticids will not only leap on motionless prey, but will display to a motionless female (e.g., Peckham, 1894, pp. 243-248; Heil, 1936, p. 10). Nevertheless, the present study showed that movement is the most important single element in the visual sign stimulus pattern, in both courtship and threat display, in all the salticids tested. Although display was occasionally obtained by a motionless spider, the courtship response always occurred under the following conditions: first, the stimulus was a female; second, the displaying male was of A-tone with exceptionally low threshold; third, the motionlessness of the stimulus was the only unusual factor in the situation. On other experimental occasions in which the above conditions were fulfilled, however, only negative responses were drawn. Table IV gives test data and results of pertinent experiments.

In many (certainly more than twenty) unrecorded, casual observations, a normal spider, which was sitting quietly when the male to be tested was introduced, would not draw a display until it moved, even though the two spiders were close together and the test male, judging by his actions—his turning, or moving toward the stimulus—had certainly become aware of the stimulus.

In more than 300 tests on 10 species, in which the stimulus was in some way unnatural, no positive response was ever obtained until the stimulus was moved. Many times the slightest, brief, manual twitching of the cardboard mount was enough of an

TABLE IV.

Responses of Males to Motionless Females.

Series A. Conditions. Male of A-tone; normal female chloroformed, placed on cardboard mount in approximately natural position; chemotaxis, but not distance chemoperception, eliminated (i.e., fresh sheet of paper on open table used for each test); same female in experimental session drew display from same male both before test (followed by rest) and immediately after. Exposure of each male to stimulus consisted in allowing him to drop near, or run toward, female, chivvying him gently with brush if necessary, to ensure her being in his direct line of vision. Even in negative responses, attention was often gained, even extending to feeling of the female with palps and legs, although display was not released.

Species.	No. of Individuals.	No. of Tests.	Negative Responses.	Positive Responses.
<i>Menemerus bivittatus</i>	5	7	6	1
<i>Semorina brachychelyne</i>	1	2	2	0
<i>Sassacus flavicinctus</i>	2	2	2	0
<i>Phiale dybowskii</i>	1	5	0	5
<i>Phiale flammea</i>	2	3	0	3
<i>Corythalia chalcea</i>	1	1	0	1
<i>Corythalia xanthopa</i>	4	12	11	1 (delayed)
Total	16	32	21	11

Series B. Chemotaxis permitted. Conditions as in A, but males permitted to cross repeatedly trails of the now motionless females.

Species.	No. of Individuals.	No. of Tests.	Negative Responses.	Positive Responses.
<i>Menemerus bivittatus</i>	4	9	8	1
<i>Sassacus flavicinctus</i>	2	2	2	0
<i>Corythalia xanthopa</i>	4	8	8	0

Series C. Elimination of Distance Chemoperception and Motion. Conditions as in A, but female isolated in glass vial. No tests completed, since males did not display even when the stimulus female regained consciousness and moved naturally. However, in spite of the imperfect conclusions, it is worth recording that not one positive response was drawn in a total of more than 20 tests involving the same species listed in Series A. The enclosing of tested males, rather than stimulus females, would not have given significant results, since the effect of possible self-stimulation through crossing of their own tracks or responding to their own distance chemical stimuli, would not be eliminated. Similarly, mirror responses automatically involved sight of the males' own motions (however slight).

Series D. Alteration of Female Appearance. Conditions as in A, but female painted or upside-down. More than 25 tests, using stimuli which gave positive responses when moved, were all negative when motionless. See pp. 191 and 193 for tested species; all were given motion response tests in the same session. No stimulus which was unsuccessful when moved drew display when motionless.

Series E. Use of Models. No motionless model, even when successful in motion, drew a positive response. See p. 190. Test individuals were given motion-response tests in the same session.

addition to the stimulus situation to draw a prompt display.

This manual jerking of the mount of a chloroformed or fresh dead female was as effective as the female's own motions in drawing display. Her further motion was not essential, once the male had initiated display; it is, however, customary in normal courtship for even A-tone females to turn and twist and, especially, to retreat a few inches at least once or twice during courtship.

Also, the finer motions of females during male display almost certainly have value. In various species—in *C. xanthopa*, for example—females early in courtship brace themselves high in a position similar to a pre-threat stance in males. Just before or after the beginning of the male's Stage II, they crouch low. Again, in very many species, the females vibrate the palps rapidly during the early stages of courtship. Finally, in a few species, notably *C. fulgipedia* and *Sassacus ocellatus* among Rancho Grande examples, excited females often make weak copies of the males' motions, with occasional individual quirks of their own. None of these female motions ever proved to be in the least necessary either to release or to direct male display. There seems no question, however, but that they have minor directive value, and the female's eventual, crouching quiescence, as in other animal groups, certainly acts as a positive factor in permitting the continuation of Stage II. Also, it is this crucial point which in intermediate genera largely determines the continuation of display as Stage II courtship or as contact threat or actual fighting. In final summary, however, the function of female posture and motion changes is minor: in no genus which I have observed closely does the release of Stage II depend, in lock-and-key fashion, on any motion, or cessation of motion, in the female.

From the female's viewpoint, the sight of a male making appropriate courting motions is essential for acceptance. Exactly what constitutes, for each species "appropriate motion" is, however a completely unsolved question of obvious evolutionary interest. Since no method has yet been devised of testing this aspect, only the following general remarks may be made.

Little or no notice is taken of motionless males, although occasionally an A-tone female will approach or even touch one, without any attempt to injure or eat him (cf. behavior toward a partly blinded male, p. 185). No male was ever allowed to mate without complete courtship for the species, although sometimes the whole display was raced through in less than a minute, with no repetitions of stages, where both individuals were of high tone. In the occasional instances where males, because of low tone or a confusing experimental factor, omitted display and leapt directly on the female, she invariably drove him off or escaped.

Many males of high tone court females of similar-appearing or closely related species.

These females are often attentive for long periods and make no effort to attack or retreat. It is usually the female that withdraws, often before Stage II is reached. It has yet to be determined how much her withdrawal depends on the, for her, "incorrect" pattern of male motion, and how much on the unsatisfactory character of other elements in the stimulus configuration.

In the release of inter-male threat display, motion is usually essential. Once a *C. xanthopa*, of especially high A-tone, did perform threat to a chloroformed male; this, however, was the only exception in more than 25 trials on different species. Those males which react to their mirror images will very rarely display unless the mirror is moved jerkily forward.

One more point should be emphasized in regard to motion in general. The positive responses to motionless stimuli, of whatever nature, usually occur when the test spider is dropped suddenly near the stimulus. It seems likely that the visual effect to the spider may be similar to that obtained when the stimulus is moving—roughly analogous to a human passenger's confusion when one of two parallel trains starts to move.

To sum up: Male display is sometimes released in the presence of motionless females. In these cases, however, the males are of extremely high epigamic tone (A-plus), the females of unaltered appearance, and the general external conditions propitious. Therefore, although movement of the stimulus is not a primary releaser for courtship, it is an important secondary releaser, and, doubtless, a director as well. Appropriate motion of the male is essential for acceptance by females. The response to motion does not appear to vary with the degree of specialization within the family.

iii. *Distance.* The distance at which salticids perceive their prey and mates, and at which they start display, has been measured for a variety of species (e.g. Peckham, 1894, p. 242; Homann, 1928, p. 247 ff.). In this study it is pertinent to add the following remarks and conclusions.

Corythalia xanthopa, which averages around 4.3 mm. in length, is typical of moderately small species at an advanced stage of visual evolution. Males will come to a state of attention and approach a female on the same level, from a maximum distance of ten inches, but the usual limit of attention (as distinct from display) is not more than six inches for courtship, much less for threat. Neither courtship nor threat usually takes place at more than three inches, and usually at 1.5 to two inches. At the resumption of an interrupted series, however, it may start at 3.5 to four inches. Stage II, in courtship or threat, starts at less than one inch, usually at about half an inch. *C. chalcona* and *fulgipedia*, which have apparently equal visual dependence with *xanthopa*, are both somewhat larger than the latter; in correlation

TABLE V.

Response of *C. xanthopa* Males to Spiders of Unusual Size.

Conditions. All tested males of A-tone, giving prompt response to one or more standard stimuli before and after test period; rules to avoid summation observed; all fed less than 24 hours previously; stimuli presented on open table, on same plane as tested spider; chemotaxis not permitted (fresh paper for each test, no trail crossing allowed.) Distance chemoperception not specially eliminated, although a short subsequent series of control experiments, with same stimuli dried and mounted, gave closely similar results; in other experiments (pp. 177 ff.) it was established that A-tone males react with threat display as fast or faster to mirror images and mounted dried *xanthopa* males, when manually jerked, as to naturally moving males. Stimuli were lightly chloroformed and placed on mount, which was moved jerkily in front of tested males and/or allowed to move naturally as effects of chloroform disappeared. Stimuli were reinforced by being chivvied constantly in front of tested spider, as necessary. When no response occurred within three minutes, results were counted as negative.

Supplementary Data Concerning Table. "Approx. proportion *xanthopa* visible area" (second column), roughly indicates size of stimulus, in an alert, semi-resting position (except in the display-mounted *chalcona* in comparison with that of *C. xanthopa*, from a direct frontal view. The proportions were taken by multiplying the height (ground to top of carapace) by the distance between the most laterally directed tarsi.

In the large *Eustiromastix* sp., the largest local salticid, the male in frontal view is unadorned black, the female dark brown with many gray and white hairs. A tendency in positive responses to react with display at more than normal distances to these large stimuli.

The small *Corythalia* sp., not yet described, were brought alive to Rancho Grande from Caracas for the experiments; the clypeus has a small, creamy white spot; legs black with faint white spots.

Obviously, the data in this table are connected with responses to form, pattern and color.

Name	Remarks.	Approximate proportion <i>xanthopa</i> visible area.	Number tested.	Number of tests.	Responses.					
					Threat.	Courtship.	Mixed, threat, courtship.	Fear-flight behavior.	Stalking-crouch behavior.	Attention only or no reaction.
A. Stimuli larger than <i>xanthopa</i> : <i>C. chalcea</i> , ♂ <i>C. chalcea</i> , ♂ <i>C. chalcea</i> , ♂ <i>C. chalcea</i> , ♀ <i>Eustiromastix</i> sp., ♂ <i>Eustiromastix</i> sp., ♀ <i>Eustiromastix</i> sp., ♀ Large heteropodid ♀	normal	x 1.65	10	20						20
	clypeus painted yellow	x 1.65	9	10		2	1	4		3
	normal, mounted in threat position	x 2.5	1	2	2					
	normal	x 2.5	2	2				2		2
	clypeus painted yellow	x 4.8	6	10	8			2		2
	normal	x 6.0	4	4				5		1
	clypeus painted yellow	x 6.0	3	6						10
	clypeus painted yellow	x20.0	5	10						
B. Stimuli smaller than <i>xanthopa</i> : <i>C. xanthopa</i> , pre-pre-adult <i>Corythalia</i> sp. ♂ <i>Corythalia</i> sp. ♂ <i>C. xanthopa</i> , ♂, pre-adult	clypeus painted yellow	x 0.2	5	5	2	2			2	3
	normal cream-spotted clypeus	x 0.3	6	8	1	1	1			4
	clypeus painted yellow	x 0.3	3	3						
	normal (sparse clypeal yellow)	x 0.6	5	5		2				3

TABLE VI.
Spectral Reflectance of Paints Used in Salticid Experiments.

Conditions: Ultraviolet (UV) reflectance judged optically from comparative inspection of negative images of paint samples; lens, Leitz 50 mm. Summar; film, Eastman Super XX; filter, Wratten No. 18A; exposure, 1 sec. @ F 3.5; illumination, light from north sky, partly cloudy, noon, June, latitude 10° 21' north. Spectral reflectance readings from curves furnished by Electrical Testing Laboratories, N. Y., made from same samples on Hardy spectrophotometer; reflectance factor in terms of magnesium oxide.

Wave-length (mμ)	Reflectance Factor										
	White (Devoe)	Blue (Devoe)	Green (Devoe)	Yellow-green (Devoe)	Yellow (Devoe)	Yellow (Flo- quil)	Orange (Devoe)	Red (Devoe)	Red (Flo- quil)	Red-&- white (Devoe) (Pink)	Black (Devoe)
UV	very strong	strong	weak	very weak	very weak	very weak	very weak	weak	very weak	strong	very weak
400	.715	.432	.080	.067	.115	.067	.050	.080	.030	.450	.025
410	.725	.450	.082	.070	.120	.067	.055	.087	.032	.462	.032
420	.735	.480	.090	.075	.130	.067	.057	.092	.033	.477	.035
430	.750	.515	.095	.082	.145	.067	.058	.095	.035	.492	.035
440	.755	.535	.110	.090	.165	.068	.060	.098	.035	.512	.035
450	.765	.550	.135	.107	.197	.070	.063	.013	.035	.522	.035
460	.770	.545	.180	.145	.250	.070	.065	.012	.037	.520	.035
470	.775	.505	.255	.215	.330	.075	.067	.095	.038	.518	.035
480	.780	.440	.365	.345	.425	.078	.068	.087	.040	.513	.035
490	.782	.365	.475	.475	.520	.087	.072	.085	.043	.507	.036
500	.785	.280	.545	.565	.597	.105	.075	.077	.045	.498	.037
510	.785	.215	.552	.617	.640	.157	.077	.072	.052	.492	.037
520	.787	.160	.520	.637	.667	.265	.080	.068	.057	.488	.037
530	.787	.125	.470	.637	.680	.402	.083	.070	.060	.493	.037
540	.790	.097	.405	.620	.685	.515	.105	.070	.062	.502	.037
550	.790	.080	.335	.592	.692	.575	.160	.067	.067	.507	.038
560	.792	.067	.275	.560	.697	.615	.270	.068	.075	.510	.038
570	.795	.060	.220	.535	.700	.640	.420	.075	.080	.530	.038
580	.800	.057	.185	.525	.705	.657	.550	.100	.085	.580	.039
590	.805	.055	.167	.523	.713	.670	.625	.180	.115	.650	.040
600	.810	.057	.155	.525	.715	.677	.665	.335	.195	.715	.040
610	.812	.060	.147	.532	.725	.678	.688	.550	.310	.747	.040
620	.817	.062	.137	.550	.737	.678	.705	.575	.395	.755	.040
630	.820	.067	.132	.577	.747	.678	.718	.625	.450	.777	.040
640	.825	.080	.135	.615	.752	.677	.735	.657	.478	.787	.040
650	.830	.092	.145	.640	.763	.677	.750	.680	.493	.798	.040
660	.835	.115	.167	.657	.777	.678	.765	.700	.502	.807	.041
670	.845	.145	.195	.665	.790	.680	.780	.722	.510	.818	.041
680	.850	.190	.225	.657	.795	.683	.792	.740	.513	.827	.042
690	.855	.242	.280	.653	.805	.685	.802	.755	.522	.838	.042
700	.860	.315	.342	.663	.815	.688	.813	.767	.527	.843	.043
710	.863	.392	.407	.692	.820	.690	.820	.773	.532	.850	.043
720	.865	.465	.463	.720	.823	.693	.827	.787	.535	.853	.042
730	.867	.530	.515	.745	.827	.697	.832	.795	.538	.858	.042
740	.870	.577	.558	.770	.830	.698	.835	.780	.540	.860	.042
750	.872	.610	.595	.790	.834	.702	.840	.887	.542	.862	.042

they have slightly greater attention and display limits, thus illustrating a general principle of the spatial limits of salticid responses.

In comparison with *Corythalia*, species which still place a relatively high dependence on chemotaxis and/or distance chemoperception, appear relatively short-sighted. Thus, *Ashtabula* and *Semorina*, although similar in length to *C. xanthopa*, rarely give evidence of first attention at more than four inches, and usually much less. Display begins even closer, and, as always, Stage II starts closer than Stage I.

It must be kept in mind that two spiders are seldom in the same plane in the field; therefore, one customarily enjoys the advantage of an obliquely downward view on the expansive dorsal surface of the other.

Once more the importance of the physiological state should be emphasized: A-tone males tend to start attention and display responses at greater distances than others.

iv. *Size*. The display responses of salticid males to stimuli of unusually large and small size do not appear to have been previously investigated. In this study *C. xanthopa* was subjected to a series of experiments, the

distinctness of its threat and courtship responses making it an especially interesting species. Because of the importance of distance chemoperception in its courtship releasing mechanism, males rather than females were usually selected as stimuli. The results of the tests appear in Table V. In casual observations on other species, primarily concerned with inter-specific display, it was always true that where two species had display relations, there was never much discrepancy in size.

Conclusions: First, Appropriate size is an important secondary sign stimulus to display. No male *xanthopa* will give any kind of a positive display reaction to a spider with a frontal area of more than five times, or less than one-third, of his own. In other words, in linear measurements, positive responses may be given to stimuli measuring up to about twice natural size and down to about one-half.

Second. The responses within this range are highly variable and signs of confusion are frequent. The courtship response is often given in these unusual size ranges to stimuli to which a threat response would seem more appropriate.

Third. Addition of a clypeal band of yellow paint to an otherwise black frontal view, sometimes changed negative to positive responses. This yellow resembled, to human vision, that of *xanthopa* males. Both brands used had slight reflectance below about 520 $m\mu$ (Table VI).

Fourth. As usual with unnatural stimuli, responses were usually obtained only by deliberately reinforcing the stimuli. This was accomplished by repeated presentations in quick succession, and constant chivvying to keep them moving in the direct front visual field of the spider. Spiders below A-tone gave consistently negative results.

Fifth. There was a tendency to respond to large stimuli at longer range than the normal.

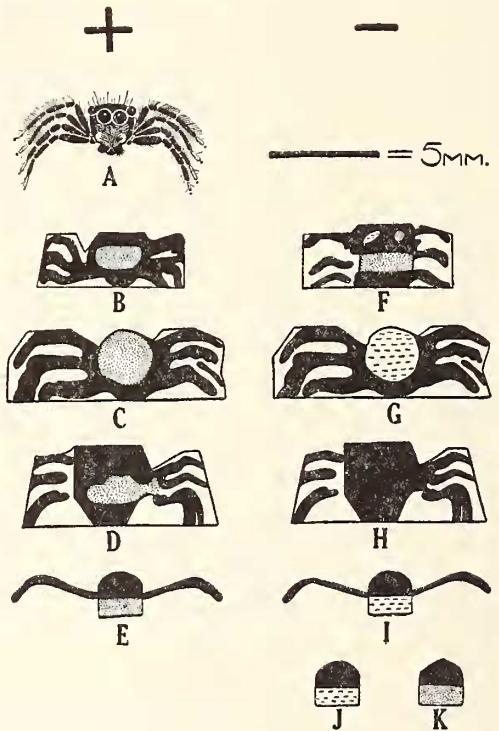
v. *Form*. The general shape of the spider is another secondary sign stimulus for releasing display. Heil (1936), working with life-size pictures of *Evarcha*, performed some experiments on this subject. He found that the number of positive display responses decreased rapidly with the simplification of the drawing, particularly in the reduction of lines representing the legs. The following results, which support and extend those of Heil, were obtained at Rancho Grande.

As in other factors, the importance of form varies inversely with the normality of the test situation, and with the drive of the individual; an A-tone *C. xanthopa* of especially strong drive will respond (with threat) to a jerked, life-size paper model of great simplicity, to the jerked carapace of a dried male, or to a jerked or naturally moving normal male with a high black paper "hat." None of these extremes is successful under other conditions, or in combination with one an-

other. For example, none of them draws display from a male of mediocre drive, while a legless paper model or a motionless carapace is unsuccessful even with males of the highest tone.

Because of the variety of contributing factors, a tabular representation of the experiments in this series would not give as true a synopsis of the results as the following running account with selected and annotated field notes. All of the experiments were performed under the conditions described under Table VI. In this series the tested species were *Corythalia xanthopa*, *C. chalcea* and *Phiale flammea*, all visually advanced species in which chemotaxis and distance chemoperception are of reduced importance.

Models. Cardboard models were tested on male *C. xanthopa*. Drawings of successful and unsuccessful models, made through a binocular microscope, are shown in Text-fig. 7. "A" represents a careful drawing of a male in threat position, for comparison, and was not used as a model; such detail, of course, have been impossible to include on a



TEXT-FIG. 7. Examples of models used in experiments on form-pattern-color perception in *Corythalia xanthopa*. The stippled areas were painted yellow, the dashed areas white, the backgrounds light green; spectrophotometric data in Table VI. A, detailed drawing of *C. xanthopa* in threat position; B-E, drawings of pasteboard models which drew threat responses, in order of their success, from the most (B) to the least (E); F-J, unsuccessful models. Note that the only difference between successful and unsuccessful in some cases was the presence or absence of a yellow median area. See text.

surface 5 mm. across. Similar models, but relatively larger or smaller than those shown were never successful. Even the unsuccessful models (right column) drew some attention from A-tone males. All were drawn in Higgins India Ink on bits of pasteboard; interstices between "legs" were painted pale green (see wave length analysis, p. 189 for this and other colors mentioned hereafter), from the same jar as the mounts and similar in reflectance curve to the paper substratum. This tint, used frequently as background in series of experiments involving living stimuli, appeared, from the tested spiders' behavior, to provide for them excellent contrast.

The most successful model was B, the least successful in the positive series, E. The best of them, however, drew only delayed display. It will be noted that all successful models had the following characteristics: a roughly squared or rounded central portion, painted matte black and yellow, with a greater or lesser series of lateral extensions. The "eyed" model (F) was never successful, nor were models similar to or identical with the successful one except for black or white in place of yellow in the central region. Plain black quadrilaterals—i.e., without "legs," but covering the same area as B and D—were always unsuccessful, even when furnished with a median yellow spot or bar. Also unsuccessful were all more extreme models, including equilateral and isosceles triangles; the latter were tried both vertically and horizontally, and all were furnished with a median yellow area. Finally, no small, median portion, representing the carapace only, ever drew a response.

Form Experiments with Specimens.

General Shape. The following experiments also show the necessity for a general shape approaching the normal. A young adult female *C. chalcea* was lightly chloroformed, placed on an L-mount and covered with a bit of flimsy black silk (chiffon), which scarcely enlarged her, but effectively concealed her shape. When she was jerked before a high tone male, no display was drawn. However, when the whole was surmounted by a large, dried *Eustiromastix* sp. (a male, plain dark brown with a painted yellow clypeus), the *chalcea* promptly courted, following through to attempted mating—not with the hidden *chalcea*, but with the *Eustiromastix*. Single, fresh abdomens, of both males and young females, were presented to males of *xanthopa*, *chalcea* and *P. flammea*; none ever drew display, or even attention, from a total of about 25 tests. Detached fresh legs, singly or in groups, were equally ineffective.

Importance of Legs. A legless, dried male *xanthopa* cephalothorax was very rarely successful in drawing threat display. Similarly, a legless and palpless young female *chalcea* (but with abdomen intact) drew delayed display in only three of nine tested males. However, none of these positive responses was complete: one male broke off display and

jumped, several times in succession, at the female; another, after a delayed Stage I, merely climbed onto the cardboard mount beside her, palpating its surface; a third reached Stage II, but did not follow through to twisting the abdomen, his display dying out in palpation of her body and the surrounding mount.

A single real leg was then laid flat at each side of the female, without drawing a response; but when two pairs were used, delayed but complete courtship followed.

When a sling of stiff black cotton, shaped like a broad, inverted W, was substituted for real legs, brief and abortive display followed. When a second sling was added, so that the front view showed lateral stripes of alternating light and dark, prompt, complete courtship ensued. When the second sling was removed, there was once more no response, which however followed promptly upon the second sling's replacement.

Throughout all the experiments with *xanthopa*, it proved axiomatic that mounted dried or chloroformed males with the legs stretched out at the sides drew threat display from males of mediocre drive faster than those in a huddled position.

Upsidedown females of *xanthopa*, *chalcea* and *P. flammea* were tested. These almost never drew display, the rare exceptions being from males of the very highest tone. The display never started until abnormally close to the stimulus and Stage I was exceptionally brief; occasionally a male would approach a female without display, palpating her for a time before wandering off. No actual mating attempts, which were always preceded by some display, were ever successful, the males groping about in evident confusion. Upsidedown males, on the other hand, never drew threat display or, in fact, more than passing attention.

Importance of Carapace Height. Compared with the legs, the height of the carapace is of very minor importance. Its elevation off the ground has no perceptible significance, judging from the prompt response of male *xanthopa* to the various mounts and of other forms, including *Menemerus*, *Sassacus*, *C. chalcea* and *Phiale*, to various dried or chloroformed mounted examples of their own species, none of which was ever presented balanced in life-like fashion on the legs. It must be remembered, however, that in normal display one of the most usual factors is the elevation of the carapace high on the legs.

Black and white paper "hats" of various sizes and shapes were fastened above the eyes to males and females of *C. chalcea* and *P. flammea* with rubber cement. So long as other conditions approached the normal, appropriate display was delayed little or not at all, and a female *chalcea* readily accepted a black-hatted male. However, in the case of hatted females, the males did not carry display through to actual mating attempts, in

this small set of "hat" tests which totalled about a dozen. The highest addition tried measured twice the height of the clypeus-plus-AME-diameter.

Conclusions. First, shape is of secondary significance in the release and direction of display.

Second, deviations in shape which do not hinder display release nevertheless often prevent mating.

Third, the primary shape requisite for releasing and directing either courtship or threat in *Corythalia* and *Phiale* are a roughly quadrilateral figure, broader than high, the lateral portions of which show some suggestion of dark and light horizontal stripes.

Fourth, the vertical dimension is less important than the horizontal as a factor in display.

Fifth, when the shape of a stimulus deviates from the normal range of variation, the tested spider must be of high tone and the other factors in the display situation must in general be normal, in order to draw a display response.

vi. *Pattern, Intensity and Color.* The parts played by pattern, intensity and color in courtship and threat displays are, as in other groups, exceedingly difficult to determine and to distinguish; in the present study only the surface of the question has been scratched. It should be pointed out that the distinction made here between "shape" and "pattern" is obviously artificial, although, in the preceding section on shape the emphasis was on the general form of the figure, rather than on the details; however, the stimulus value of the legs certainly belongs as much under "pattern" as under "shape."

The Peckhams (1887, p. 403) were the pioneers, as usual, in investigating color perception in spiders. Working altogether with lycosids, they approached the problem through a choice method, the lid of the cage being covered with glass squares differing in color. Since neither intensity nor wavelength was controlled, their results can have no final significance for modern workers. Nevertheless, it is very suggestive that the vast majority of *Lycosa* chose "red," since these spiders are largely negatively phototropic; very likely the hunting spiders in general, like the majority of insects, will prove to be relatively insensitive to the red end of the spectrum.

The Peckhams performed another series of experiments, painting female salticids partially or completely "blue." Following painting, the previously displaying males paid them much less attention, either not displaying or delaying the response, although it was resumed promptly when normal females were introduced. A number of uncontrolled factors were of course involved in this series (1894, p. 249).

Kaestner (1949) has just published a preliminary report indicating that color percep-

tion does occur in the European genus *Evarcha*.

Apart from the question of actual color perception in salticids, the minor role played by color, or at least by lightness and darkness, in courtship is shown by *Maevia vittata*, the North American salticid with dimorphic males. Painter (1913) seems to have been the most recent worker on the subject. The dimorphism is controlled by the presence or absence of a small sex chromosome, and in the population studied the two forms were about equally abundant. The principal distinctions consist of general color—black in one, gray with orange palps in the other—and the presence of a pair of tufts on the carapace in one, absent in the other. In spite of considerable individual variation, the two forms are quite distinct visually; in addition, the display patterns show differences. Nevertheless, both were readily accepted by females, as were dark males with their tufts missing. According to the Peckhams (1889, p. 54), who worked in a different part of the United States, the darker, tufted form was more aggressive, and was preferred by the females; also, differences in display of the gray form from that described by the Peckhams were reported by Painter. In spite of the fact that in neither study were controlled experiments performed, which guarded against summation, etc., it still seems likely that a most interesting series of behavior differences has evolved in this widespread species. Here is certainly splendid material for worthwhile work.

The disagreements between the Peckhams and Painter do not affect the conclusion that degree of lightness or darkness in males is not, in that species, of primary importance in gaining acceptance by the female.

In the present experiments, two groups of colors were used, the Floquil "Flo-paque" series and Devoe opaque water colors. Since spectrographic analysis could not be conducted in the field, library cards were painted with each hue and combination used; later these were analysed spectrophotometrically (Table VI), along with fresh samples from new jars. The latter check was employed to determine the degree of changes in the samples since their field use; these differences proved insignificant. Although the paints are far from a theoretical monochromatism, most of the hues do show steeply ascending curves near the regions of highest reflectance.

During the field experiments, the paints and the yellow of *C. xanthopa* (cut in two, without exposure to chemicals, just before the photograph was made) were photographed through Wratten Filter No. 18A, which screens out virtually all light except the ultraviolet; the spider's yellow areas did not perceptibly affect the negative according to observations through a binocular microscope. (Spider photographic data: lens, Leitz 90 mm. Ektar; exposure, 13 sec. @ F12.7; other data as in Table VI). In view of these

negative results, it is apparent that ultraviolet is not a factor in the effect of *xanthopa* yellow as a sign stimulus; they do not of course, preclude the possibility of the spider's visual sensitivity to ultraviolet wave-lengths. So far the yellow of the spiders has not been further analyzed: dried specimens appear to be too changed to give trustworthy results.

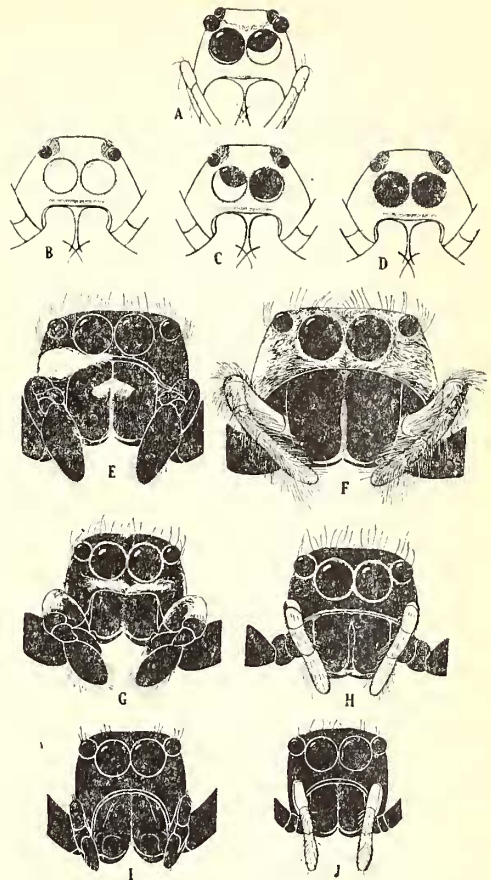
It will now be shown that the various characteristic "display ornaments" are in themselves of minor importance in the samples studied as display sign stimuli, except in certain inter-male relationships. *C. xanthopa* was the subject of most of the experiments; *C. chalcona*, *C. fulgipedia*, *Menemerus bivittatus*, *Phiale flammea* and *P. dybowskii* were used to a lesser extent; a few illustrations were taken from *Semorina*, *Ashtabula* and *Sassacus*.

The Role of Female Pattern, Intensity and Color in Stimulating Male Display. The female's pattern and color equipment may be divided between that of the frontal and the dorsal (particularly abdominal) regions. It must be kept always in mind, however, that in practice the male's first view of the female is often obliquely downward, so that both regions are simultaneously visible. In the experiments below, the two regions were kept separate, the stimuli being presented on a plane surface in direct frontal or rear views.

Frontal pattern. (Text-fig. 8). In females, this may be divided functionally into two well-marked classes; first, differentiation of frontal markings, including those of clypeus and palps as a unit, and, second, distinctions concerning the palps alone. The sexual difference of frontal markings is noticeable in many salticids, but ranges through all degrees and is often absent. The following examples are from the present series: In *C. xanthopa* and *Phiale* spp., the females are black-faced while the males have strong yellow or white clypeal bands which continue, when the palps are bent, onto certain palpal segments. In contrast, in *C. chalcona*, *C. fulgipedia* and *Eustiromastix* sp., the females are frontally moderately or very hairy, chiefly gray and white, while the males are almost completely black and naked. In *Menemerus bivittatus*, both sexes have the hairs pale, but the female more so than the male, where they are confined to a white clypeal band. Finally, in *Mago acutidens*, the frontal region is black and naked in both sexes. It should be remembered that the legs, particularly the first, are often much darker in males than in females.

Experiments were made with *C. xanthopa* and *P. flammea*, both having sexual dimorphism in this respect, to determine the effect on the male of alteration of the clypeus.

When normally black-faced young female *xanthopa* were given yellow clypei and palpi, resembling those of the male, the courtship display was always drawn as promptly as ever with no hint of threat or confusion. Chemotaxis, but not motion or distance chem-



TEXT-FIG. 8. Examples of frontal sexual dimorphism and types of "ornamentation" in representative salticid genera. A, *Lyssomanes bradyspilus*, female; B, C, D, same, male, showing three positions of ocular color "change"; E, *Menemerus bivittatus*, male; F, same, female; in the male, one-half of the white clypeal band has been shaved off to show narrowness of true clypeus; G, *Phiale flammea*, male; H, same female; I, *Mago denticelalis*, male; J, same, female. All figures drawn to same scale; note how in *Mago* the individual female depicted happens to be smaller than the male; this often occurs in salticids, although the carapace size of the average female in a given species is always somewhat larger than that of the average male.

The adaptive value of the "ornamentation" is by no means equal throughout the family. In *Phiale*, the clypeal band of the male is a releaser for threat display; in *Menemerus* there seems normally to be no inter-male display at all, although a similar clypeal band is well developed, nor is it of apparent importance in courtship; *Mago*, lacking all clypeal "ornamentation", but having a plain, high, black carapace and clypeus, has both courtship and threat well developed and moderately well differentiated. Note the prevalence of pale palps in the female; these are usually vibrated during display, but do not, in the several tested genera, function as either primary or secondary releasers of male courtship. Sexual dimorphism varies from negligible (e.g., *Mago*) to extreme (e.g., *Menemerus*); see also Part I, 1948.1, text-figs. 12-15 incl., for examples of the latitude of dimorphism within a single genus, *Corythalia*.

ical stimuli, was excluded. (Test-material: 2 females, 6 males, 9 tests).

Four weeks later, one of the same females, still unmated, but now more than "middle-aged" for that species, was given a new coat of paint and presented to a fresh series of males. The results were quite different: (Test-material: 1 female, 7 males, of which 6 were of A-tone and 1 of B-tone; 10 tests.) First round: 2 threat, 3 courtship, 2 undecided; second round (3 only tested): 1 threat (last time this individual was uncertain), 1 courtship (last time this individual also courted), 1 courtship (last time this individual was uncertain). Total of responses: 3 threats, 5 delayed courtships, 2 confused responses (including that given by the low-tone individual). The threat reactions were all promptly given, while courtship followed a period of uncertainty characterized by attention, "following" with the eyes, and intermittently dropping the abdomen (i.e., alternating in courting and threat position). It seems apparent, in conjunction with other experiments, that the waning airborne chemical stimuli of the female were here responsible for the inclusion of threat and uncertainty in the results.

Two male *xanthopa* were now altered; in one the yellow scale-hairs of clypeus and palps were painted black; in the other the palps were detached and the clypeal scales scraped off with a razor. The results (5 males tested, 5 tests) consisted of 2 very rudimentary brief courtships (1 single rock each), 1 abortive, brief, courtship-plus-threat and 2 responses which were negative except for brief attention. When a mirror was presented to the palplless, shaved male, as he stood on the same spot where a young female had just been sitting, he gave prompt attention, courtship stance and a few rocks, then retreated briefly, and ended by leaping at the mirror, but above the image level. The same response was repeated on fresh paper, but since no rest time was given in this instance, summation may well have been involved; unfortunately because of an accident to the shaved male, and lack of time for repetition, the testing was not resumed.

When similar experiments were conducted on *Phiale*, the results were as follows:

When a normally black-faced young *P. dybowskii* female was given white spots on the palps and, later, a white clypeal band similar to those of the males, repeated tests always drew complete courtship, not threat.

When an old *P. flammea* female was similarly treated, two males courted relatively promptly so long as she was motionless, but approached her, for mating, from the side, out of sight of the abnormal, white palps and never got properly oriented toward the abdomen.

When the female mount was moved during the presentation, the male first gave threat, changing to a prolonged, side-approach courtship only when he was unusually close to her.

When her paint was washed off, both males gave prompt, normal, complete courtships.

The entire frontal aspect of a young chloroformed *C. chalcea* female, excepting the eyes, was painted white. As she sat motionless on a mount, an A-tone male was introduced with the following results: "He soon vibrated palps in the air, making semi-circles until he came close to the mount. Then he palpated and further vibrated the palps, circling off on the surrounding paper and returning to mount time and again. However, there was no trace of display, and no attempt to mate. It was exactly like the behavior of a male introduced to the spot where a female had recently been sitting or moving about. Finally, after more than five minutes, he went away. When he was brought back, to a distance of about two inches, the female was jiggled infinitesimally. He displayed at once, with good courtship. The first mating attempts in Stage II were from her unpainted rear. Then he displayed Stage I again and approached with a typical Stage II from the front." (Field lab. note).

One typical feature of the female frontal appearance in many species is the rapid vibration of contrastingly pale palps at a certain stage of courtship; it occurs usually in the earlier phases, during her first apparent awareness of the male's Stage I. Sometimes, as in *Semorina*, *Ashtabula*, *Phiale* and *Mago*, contrast to the otherwise dark front (including or excluding legs), is attained principally through pale integument; sometimes, as in *Menemerus*, the effect is accentuated by long white fringes. In species such as *C. chalcea*, where vibration of the palps by the female is of casual and infrequent occurrence, they are not notably lightened or "ornamented." When present, the paleness and "ornamentation" usually extends to most segments, unlike special spotting with scale-hairs of certain segments which is so typical of some males, as in *C. xanthopa* and *Phiale*.

In order to determine their importance as display sign stimuli, the female's palps were removed from examples of *Menemerus* and *Phiale*. In every case the males courted the mutilated females as readily as normal forms. (*Menemerus*: 1 female, 8 males, 10 tests; *P. dybowskii*: 1 female, 1 male, 2 tests.) Palps were not removed from any of the other species, but males of all genera mentioned in the preceding paragraph always displayed as readily to a chloroformed female when her mount was slightly twitched as to a normally moving individual; the separate motion of contrasting palps is certainly not even a secondary sign stimulus.

In most females, as in males, the eyes are rimmed more or less conspicuously with reddish, yellowish or white scales. Since males display as readily to clumsily blinded females, in which all trace of the scales is covered, as to normal ones, these scales seem to have no primary or secondary display value in modern times.

Dorsal pattern: Dorsal carapace markings are almost always absent in the species studied, except in *C. fulgipedia* and *Phiale*, where they are highly variable and practically identical with those of the male; the white submarginal carapace bands characteristic of many species do not appear to be displayed in any of the ones I have observed and, indeed, short of a theoretical lateral display, involving flattening of the legs, it is difficult to see how they would ever be plainly visible.

The females of *C. xanthopa* have a naked black carapace, but a prominent abdominal pattern, consisting of a pair of broad, longitudinal, yellow stripes on a black ground. Males frequently display to the rear view of normal females before they have seen her dark front view at all. Blackening of the female abdomen produced no change in reaction time (1 female, 2 males, 6 tests). Then two young females were selected, of similar age and condition; the abdomen of one was blackened; they were then placed, facing away from the center, about eight inches apart on the ten-inch line of the concentric test circles (Part II, 1948.2, p. 145), this being about the limit of perception-response in this species. Six males in A-state were then placed in succession in the circle's center, facing exactly between the two females. In every case the male became first aware (as judged by his shifting position to look toward her, and the adoption of preliminary courtship stance) of the female whose mount was twitched first, no matter how slightly. His progress toward her was invariably interrupted by a movement from the other female, regardless of her color. By the time the male arrived within actual courting distance (several inches away), he would either court first one, then the other, impartially, or simply sit, restlessly, between them in apparent confusion. In all, four of the six males courted somewhat, and two sat quiet at courting distance and eventually retreated. Of the courters, two eventually stopped and ran between the females out of range, one retreated, and the fourth's test was broken up when the normal female came out of the chloroform and moved off. At that point the male made no attempt to follow, but concentrated at once on the black female nearby, now not being twitched, and followed through into advanced Stage II before they were forcibly separated. A second round of tests, using the same males, brought similar results, although a given male did not always behave in the second test as in the first. The overwhelming effect in all tests was uncertainty and conflict. The only possible difference noted in the response to the two females was a very slight tendency to notice the normal female first at the greatest distance (10 inches), when both were twitched simultaneously.

Thus, although the female's pattern certainly has no value as a releasing stimulus, it seems likely that in the long run the two

light stripes may have some slight directive value in the field. Under those natural conditions, three-dimensional vision is of course the rule. Therefore, the striking contrasts may make the attraction of the male's attention from farther than 10 inches, beyond the range of distance chemoperception, easier, among the dead leaves and shadows. To human vision, both males and females of this species are conspicuous in their normal habitat. However, I have never been able to gather the least evidence of this possible function, although it has been kept constantly in mind in field observations. In regard to *C. fulgipedia* females, which exhibit an abdominal pattern and color striking enough with their strong black and white, there are no distinctions from either immature specimens of almost equal size or from those of adult males; therefore the adaptive nature of abdominal pattern in any fashion, except that perhaps of disruptive coloration, is even more unlikely.

In female *chalcea*, any adaptation to display use is the most questionable of all; its dull bronzes, pale gold and black bandings are not only indistinguishable without a microscope from those of the preadult female, but they merge exceedingly well into dead-leaf or tree-trunk backgrounds, and when the spider moves it is even less conspicuous than an all-black form. If the color and pattern have any adaptive significance, it would appear to be as disruptive coloration of a protective nature; certainly it cannot help in attracting the attention of the male. A further point is that *chalcea* and *fulgipedia* females, although of strikingly different appearance, each draws display from males of the alternate species even when the males have only a posterior view.

When the abdomens of *xanthopa* females were painted solidly yellow to resemble those of males, there was no confusion: as when the clypeus and palps were painted, the male courted from the rear if the female was a young adult; as in the case of the altered front view, he became confused with old painted females.

In *Phiale*, the quite constant flaming rusty red of many species in the male is variable in females, ranging from almost male vividness to nearly black. The white spots and bars, though also variable, are nevertheless always present and, to human eyes, conspicuous, especially posteriorly. However, when the female abdomen was painted uniformly black in *P. flammea*, three males courted her promptly from the rear at close range. Nevertheless, in this genus pursuit is a fundamental, normal part of the courtship, and as often as not the male is displaying for a time to the female's posterior view. It seems therefore that while female white posterior markings have no releasing value, they, like the *xanthopa* stripes, are probably directive in the sense that they facilitate following.

In perhaps a majority of genera, the abdominal pattern appears completely undistinguished, except as probable examples of protective coloration. In *Sassacus ocellatus*, one of the species in which the female abdomen is both striking and closely similar to that of the male—i.e. iridescent green with posterior black-and-white spots—it is noteworthy that abortive female display was once observed (Part III, 1949, p. 46).

There is, however, one female abdominal marking which appears of importance in courtship. This is the sub-basal pale band, usually white, which is of such frequent occurrence in both sexes throughout the family. It is found even more often in females than in males. It is present in all of the adult females discussed in the present paper except *Lyssomanes*, *Semorina*, *Ashtabula* and *Corythalia xanthopa*. It always crosses the highest point of the abdomen and is preceded only by the naked black region immediately behind the pedicel.

In order to test its display value, abdomens were variously covered with white, yellow, black or red paint in females of *C. xanthopa*, *C. chalcea* and *P. flammea*. In painted *xanthopa*, in which the abdomen is normally striped, display proceeded though normal mating, as described earlier. In the other two species, which normally have sub-basal bands, the males appeared to become confused in the middle of Stage II, when the time came for twisting the abdomen. The following instance is typical: A *chalcea* female was painted completely white above, except for the thoracic slope of the carapace, which was inadvertently left black. Three males in seven tests courted normally until advanced Stage II, whereupon all of them tried to twist the carapace, not the abdomen, and made fumbling efforts to insert the palp too far forward. All of them gave up and moved off. When black paint was applied to this area also, lest the behavior difference involve negative chemical or other stimuli from paint, the same reaction followed. Finally, the base of the abdomen was blackened, the crest and all posterior to it remaining white. The two males still in display condition now promptly started mating after normal courtship, in the typical position. Cases of similar confusion occurred in *Phiale*: When the female abdomen was completely blackened, the males did not locate the epigynum; when a sub-basal white band was added in the usual position, courtship was completed without delay. (1 female; 3 males; 3 tests). The confusion following lateral approach in response to legless females has already been discussed (p. 191).

The following interim summary may now be made in regard to the role of female pattern and color in stimulating male display:

First. They are of the most minor importance, in comparison with other stimulus situation components, having no releasing functions and only rarely a directive value.

Second. Young adult females in the tested species, when painted to resemble males, or when the typical pattern is severely altered, are nevertheless courted as females, so long as the remainder of the stimulus configuration remains normal; otherwise there is no response.

Third. Old females so painted, or males painted to resemble females, draw delayed or confused responses, or, sometimes, complete threat display.

Fourth. The correlation of palp ornamentation and vibration in females, although it may well increase visibility to and/or excitement in the male, is certainly not even of secondary releasing value; males court palpless females of *Menemerus* and *Phiale*, as well as chloroformed—and hence quiet-palped—females of these and other genera, promptly and completely.

Fifth. While the white posterior markings or other patterns of some females may increase visibility to pursuing males, this is pure speculation; the markings are not necessary to release display, nor are any of the other tested female abdominal patterns.

Sixth. The white sub-basal abdominal band, which occurs so frequently in the family, proves to be a directing mechanism for copulation in *Corythalia chalcea* and *Phiale flammea*, the only two species tested. There is contributory evidence that this is also true in other species.

The Role of Male Pattern and Color in Gaining Acceptance by the Female: The following paragraphs summarize the experiments in this series. The difficulty in assembling data was in bringing treated males back to full A-tone display condition after the operation, and in having receptive females on hand at the right time.

Menemerus bivittatus. Five females all paid prompt attention to the display of two males, each with the white clypeal bands and palpal spots scraped off, showing black integument beneath. Though all the females allowed a male to reach the part of Stage II in which he was entirely out of range of her AME, on top of her, mating was not completed in any case. However, these females on the test days rejected even normal males, and two of them proved to be already fertilized.

Phiale flammea. Four females paid prompt attention to two displaying males, each with



TEXT-FIG. 9. Antero-dorsal view of a female abdomen (*Phiale flammea*). The pale band acts as a director for turning the abdomen in the final part of Stage II courtship display.

the white clypeal bands and palpal spots scraped off (as in *Menemerus*); in two cases the males, during prolonged (20 minute) sessions, were allowed to reach Stage II; there were no acceptances; the females appeared very sluggish, but normal, control males were not then available for determining the females' true tone.

Corythalia chalcea. A female accepted promptly a male painted to resemble *C. fulgipedia*, having white pigment on the femur and patella of the normally black palps. These two species display to one other freely, but never, in numerous observations, did display proceed beyond early Stage II.

C. fulgipedia. A female accepted promptly a male with the white-spotted palps blackened to resemble those of *C. chalcea* (see above). Another female accepted a male with the frontal aspect, including the legs, completely covered with white. It will be recalled that in *fulgipedia* the iridescence and fringes of the legs are displayed in courtship as well as in threat. Complete blackening of the legs did not affect the female's reaction in the least, nor did removal of the fringes. In three other pairs the male was variously painted with red, from a median red spot above the AME through covering of the clypeus and palps to a complete coating of the frontal aspects (excepting the eyes) including again the legs. Once more acceptance was complete in each case, and within the normal acceptance time of the species (3 to 6 minutes).

C. xanthopa. Two females each accepted a male with the yellow of palps and clypeus changed to white, and another in which the clypeus had been painted black and the palps removed. When the latter male reached advanced Stage II, he could not of course proceed and eventually backed off the carapace; the female, however, had showed no signs of restlessness. Another female accepted a male with the yellow areas replaced with orange.

From these examples it appears that deviations in the color and pattern of the male play a very minor part in acceptance by the female. To summarize: In three species of *Corythalia*, altered males were readily accepted by six individuals. In *Menemerus* and *Phiale*, although mating was not completed by frontally altered males, they were allowed to reach advanced Stage II; in these two genera the available females during the tests appeared to be in non-receptive condition.

The Role of Pattern and Color in Inter-male displays. This aspect was investigated rather fully in *C. xanthopa* and less so in *C. chalcea* and *P. flammea*. The following results were obtained:

C. xanthopa. Males of A-tone responded invariably with more or less prompt threat display to the following moving stimuli in which the yellow clypeal band and spotted palps appear to be involved: conscious,

chloroformed or mounted-and-dried males with yellow, orange or yellow-plus-white paint covering the front yellow areas; legs painted dark brown or black (covering iridescence); two-dimensional models of appropriate size and general shape so long as a yellow or orange bar or spot appeared across the middle; dried females painted like males; unrelated species of large size with a yellow clypeal band added; preadult male *xanthopa*, or other *Corythalia* species of similar sub-*xanthopa* size, in which males were painted like adult *xanthopa* males.

On the other hand, males responded with incomplete courtship or did not respond at all to the following stimuli: conscious, chloroformed or mounted-and-dried males with the yellow of palps, clypeus and abdomen altered to any of the following colors: red, blue, blue-plus-white, red-plus-blue; six intensities of black-plus-white which included values comparable, by Weston meter, to those of the yellow, yellow-plus-white and orange which elicit threat display; to receptive young adult females of other species of *Corythalia* painted like male *xanthopa*.

To the stimuli listed below, the reaction was variable and included incomplete courtship, threat, no reaction and a confused mixture of threat and courtship. The variability was not only between individuals, but in the same individual on different days or even at different parts of the same test period. These borderline stimuli are the following: males, or the testee's mirror image, with the yellow parts painted black as in females, white, red-plus-white or green; males with the black legs altered to white, yellow or red; females, middle-aged or old, painted to resemble males; a normal male *Phiale flammea*, characterized frontally by strong white markings on a black ground. When a male *xanthopa* face was blackened and the legs painted yellow, there was no reaction. When, as occasionally happened, a blackened, chloroformed male suddenly became conscious and threatened a normal subject, the latter either appeared startled, leaping in the air, and retreated, or, if he were courting, stopped courting and, in several instances, changed the courtship to threat display.

Male *xanthopa* in B-state responded to very few unnatural stimuli, and the few reactions which did result were so erratic and variable that no general listings would be profitable. The only invariable reaction was that orange or buff-faced males were threatened as promptly as yellow-faced examples.

The solid abdominal yellow of *xanthopa*, as seen from the rear, drew as prompt threat display as a front view; males with the abdomen striped black and yellow like females, also drew threat display. Males with the abdomens blackened, however, drew confused responses.

Unfortunately, during the inter-male series of *xanthopa* tests, which took place early in the salticid experimental period, the full

importance of the amount of mount-jerking in some species was not fully realized (*infra*). Nevertheless, in all the *xanthopa* tests, the responses did not appear in general to be dependent on the type of motion. It can be stated without reservation that the stimuli which drew the most variable, confused or inappropriate reactions (i.e., anything except threat) were almost always ineffective unless strongly reinforced by constant jerking and repeated presentations: in other words, the single twitch which in *C. chalcea* and *Phiale* sometimes made the difference between threat and courtship responses (see below) was inadequate for the less successful stimuli of the *xanthopa* series.

C. chalcea and *C. fulgipedia*. These two species, in one of which the palps are black and in the other spotted with white, display to each other freely, each maintaining rigidly its own threat pattern.

Under experimental conditions, the following tests were made: Two *chalcea* males each displayed promptly with threat to another male with his normally black face painted yellow (as in the smaller *xanthopa*, to which species it will not display). They also displayed to a larger male *Eustiromastix* sp., dried and mounted, his normal dark brown having a painted yellow clypeus. Again, a chloroformed, mounted male *chalcea* with the legs whitened, drew various responses from a single A-tone male; these ranged from incomplete courtship with a poorly oriented side approach, to prompt threat, depending on the motion of the mount: when the latter was not moved, attention only resulted; a single twitch was followed by courtship; continued jerking drew threat. When the same mount was presented to the same male on one of his B-tone days, the incomplete courtship responses occurred, with the previously successful single twitch, but no threat could be drawn with any type of motion. A male *chalcea*'s legs were blackened, to eliminate iridescence, and the now completely black individual mounted on a black background, and jerked slightly before an A-tone individual. Incomplete courtship was eventually drawn, with no trace of threat.

From the above it appears that at least in *chalcea*, change of the normal black color on the mid-frontal region to white or yellow does not affect threat response, while confusion may result when the legs are painted white; this complex would seem however to be more concerned with shape than with pattern and color in the sense used in this section; the importance of type of motion is once more emphasized; the response to the mount on black seems to be connected with visibility.

Phiale flammea. The white scales were scraped from the palps and clypeus of two males, so that they now had in frontal view the wholly black appearance of females. Neither male was chloroformed thereafter and each was of A-tone. When placed to-

gether, both gave complete threat displays starting at three inches, followed by brief sparring, in six tests on two successive days. The displays were never mixed with courtship, except that on one day the larger, less aggressive male tended to start with a generalized display (high stance, first legs high). However, when another male was chloroformed, palps and clypeus blacked and the whole mounted, the following occurred: "A normal male took no notice when the mount was not moved. When the mount was given a single twitch, the testee hesitated, adopted a high, generalized stance, then, at one inch (unusually close) he changed into a typical crawling courtship; he continued to persistent attempts to mate, even including complete twisting of the mount's abdomen." (Field lab. note). On the second round, when the mount was persistently jerked, prompt threat response was drawn; courtship resulted once more when the movement was restricted to a twitch. Here again, as in *chalcea*, the significant difference was in the amount and type of motion; and as in the yellow of *xanthopa*, the median white frontal markings were, under appropriate conditions, badges of masculinity. (cf. also p. 194 for threat display toward females with whitened palps, and the role played by distance chemoperception, p. 183).

When the first legs of a normal male were painted white, incomplete threat was drawn from three individuals.

When the flame-red abdomen of a dried male was painted completely black, including the white terminal spots, prompt threat display was drawn from three individuals; the same results followed when the white carapace stripe and submarginal band were also removed. However, when the abdomen was whitened, there was no display from any of the three in a total of ten tests; one of them stalked and leapt upon it once, apparently treating it as prey, but dropped it promptly (perhaps because it was stiff). When it was re-blackened, all three males once more threatened promptly. Intensity, rather than hue, seems to be the important factor here.

The abdominal red of *Phiale* shows no evidence of being an aposematic hue. Small frogs and lizards of several species stalked and ate *Phiale* without hesitation or apparent distaste. Furthermore, a *Phiale*, in all three tests made, showed a decided fear-flight response when dropped near a young *Anolis*; this occurred several seconds before the lizard appeared aware of the spider.

The results of inter-male display experiments may be summarized as follows:

First. The light-colored contrasting clypeal and palp markings of male *Phiale* and *C. xanthopa* have definite releasing value for threat display, subject to superior control by airborne chemical stimuli and motion. White clypeal and palp markings in the naturally black-fronted *C. chalcea* have no such value.

Second. Reflected light appearing in the (to human eyes) yellow region of the spec-

trum has threat releasing value in *xanthopa*, irrespective of intensity, when occurring in the palp-clypeal region. Other spectral regions in general release incomplete or inappropriate responses.

Third. Reflected light in the red region, added to the black frontal view, does not affect threat display in *C. chalcona*.

Fourth. When the scarlet abdomen of *Phiale* is covered with black, threat responses are not affected.

Fifth. White paint applied to legs or abdomen of male *chalcona* or *Phiale* usually draws an incomplete response, or none.

Sixth. The obliteration of iridescence in *Corythalia* legs by black or brown paint does not affect display responses.

General Summary of Value of Color-Pattern-Intensity in Epigamic Display.

First. Pattern, color and intensity are of minimum importance in the stimulus configuration of courtship, at least in *Menemerus*, *Phiale* and *Corythalia*: Male or female "ornamentation" is not a primary or secondary releaser for either female acceptance or male courtship display, respectively.

Second. It is probable, however, that in both sexes, certain spots and patterns, particularly when correlated with motion (as in spotted palps) have definite directive and/or excitatory value, or at least function as visual aids. An example of an unquestionable directive stimulus is the pale sub-basal abdominal band which, at least in *Phiale* and *Corythalia* functions during advanced Stage II as a copulation guide for twisting the abdomen.

Third. Clypeal and palp markings contrasting strongly in brightness with the black integument and present only in the male have definite releasing value in intermale display at least in two species, *Phiale flammea* and *Corythalia xanthopa*. In two other *Corythalia*, however, one with minor markings and one with none, facial ornamentation is not a threat releaser.

Fourth. There is some evidence that at least *Corythalia* and *Phiale* have poor sensitivity in the red region.

Fifth. The application of white paint to extremities in *Corythalia* and *Phiale* sometimes affects display reactions, perhaps because of apparent form alteration.

Sixth. The obliteration of leg iridescence in *Corythalia* has no perceptible effect.

The significance of deviate responses will be discussed under displacement behavior (p. 202).

VI. INNATE RELEASING AND DIRECTIVE MECHANISMS.

From data given in the preceding sections, the innate mechanisms in courtship and threat may now be viewed as integrated patterns. In all display, adequate physical conditions, including light, humidity and tem-

perature, are prerequisites, as described earlier; they, as well as the general good health and nourishment of the spiders are essential and will not be referred to again in the following discussion. Courtship and threat displays as a whole will be taken up in turn, from the points of view of both sexes, followed by a more general discussion.

A. COURTSHIP.

1. Mechanisms of courtship display in males.

a. *Releasers in A-tone males of hopper groups.*

i. The stimulus must be within range of the AME.

ii. It must fulfil certain rough size-shape-distance requirements.

iii. One of the following factors must be present.

(a). Airborne chemical stimuli.

(b). Generalized motion (for Stage I); lack of motion is customary for advanced Stage II.

iv. The following often contribute to the configuration, but are not essential as releasers:

(a). Special frontal and/or abdominal patterns, often displayed with special motions, such as the vibration of pale palp.

(b). Chemotaxis.

(c). Cessation of motion, including that of palps, often accompanied by crouching; this behavior has releasing value for Stage II, although it is not essential; close proximity is of first importance, with or without crouching.

b. *Directors of A-tone males of hopper groups.*

Groups iii and iv above are probably partly and primarily, respectively, directive in function. A light, sub-basal abdominal band is sometimes a specific director for copulation.

c. *Releasers and directors of A-tone males in runner groups.*

These differ from the hopper group requirements in the greater importance of both airborne and contact chemical stimuli, as well as of proximity. The visual stimuli of i and ii remain essential, however, as releasers;

the visual stimuli of iv are probably of less importance as directors.

- d. *Releasers and directors of males of lower tones.* Stimuli from all groups, acting in conjunction when necessary. Alternatively, a few stimuli may release and direct courtship display when strongly reinforced.
2. Mechanisms for courtship response in females.
 - a. The stimulus must be within range of the AME.
 - b. It must fulfil certain motion requirements.
 - c. Airborne chemical stimuli are probably involved at close range in Stage I, at least in the runner groups.
 - d. Tactile (and probably chemotactic) stimuli are essential in Stage II.
 - e. No obvious secondary sexual character, including special structures, "decorations" and colors, is essential to successful mating in the genera studied.
3. Course of mutual display in courtship.
In general, a system of progressive, mutual stimulation exists between the sexes, on the order of that demonstrated in sticklebacks (Tinbergen, 1948 *et ante*). However, in the salticids, especially in the more specialized forms, the situation is far less clear-cut. Omitting, for the sake of clarity, special exceptions and qualifications, the usual course of normal field or laboratory display in salticids is presented in Table VII.
4. Comments on various aspects of courtship.

Stage II is never entered upon without at least a rudimentary Stage I, even when it is only a resumption of a display briefly broken by the female's temporary retreat during Stage II, or even in the middle of copulation.

The role played from the female viewpoint by the size and shape of the male, as well as by his motion-configuration, has so far unfortunately proved impossible to test. The most pertinent data bearing on this are supplied by observations on the behavior of females watching males other than those of their own species in display; in each case the size and shape were similar to those of their own males, and they always retreated before allowing Stage II to commence; this subject will be further discussed under species barriers.

The female's own occasional reciprocal display during Stage I and early Stage II is not a vital factor in self-stimulation, at least in *Phiale* and *Corythalia*, since it is not of regular occurrence; it is practically absent in *xanthopa*, and only fairly common in the other two *Corythalia* species; much of the apparent display in *Phiale* females probably should be interpreted rather as distance chemoperception ("sniffing") motions with the front legs and palps.

B. THREAT DISPLAY. The mechanism of threat display differs from that of courtship in the absence of positive releasing or directive value of any chemical stimuli and of the greater importance of special colors or "decorations." These badges combine with non-female behavior—i.e., height and width accentuation, plus increasing instead of decreasing activity—to release threat. The various signals, in order of importance, are general motion, motion configuration, a form-size element and, finally, any special male pattern-and-color badge. In nature, all normally act together as a configuration.

In runner genera, inter-male displays practically never occur; when they do, they are indistinguishable from courtship and break off before actual contact, probably because of the absence of female chemical releasers and/or directors. In intermediate genera, courtship and threat are usually identical until the spiders are practically touching. As in the runners, inter-male displays in these groups probably are the result of a male treating another male as a female. When the requisite close-range signals—visual, chemical or both—are not forthcoming, displacement behavior then occurs as special fighting or sparring. In hopper genera, cases of mistaken identity appear to occur only rarely, since threat and courtship are usually distinct throughout display.

C. COMPARISON AND COMMENT ON INNATE RELEASING MECHANISMS IN COURTSHIP AND THREAT. Before proceeding to a discussion of the functions and evolution of display, it may be helpful briefly to compare the principal aspects of the innate releasing mechanisms of display.

The perceptual sign stimuli for releasing display are overwhelmingly visual in both courtship and threat, involving motion, form and size. Neither contact nor airborne chemical stimuli alone will release display of any form in the genera studied, no matter how great the reinforcement, nor how strong the internal drive. However, both forms of chemical stimuli play an important differential role in display, their importance varying phylogenetically: in general, the presence of an airborne and/or contact chemical signal is a positive differentiator for courtship, while a pattern-and-color signal in some species plays a corresponding positive role in threat. Absence of either one usually acts as a positive signal for the alternative

type of display, other factors being equal. Airborne chemoperception takes precedence over a color-pattern badge in test situations where both are present, since males court, not threaten, young adult females painted like males. Motion-configuration also supercedes color-and-pattern, since males change courtship to threat when a previously quiescent, female-painted male starts threat display. Motion-configuration itself is a strong differentiator of the two types of display, particularly in the earliest and late stages; in the middle portions of courtship (i.e., late Stage I), the tendency of some females to reciprocal display never confuses the male.

As in other groups of animals, deficiency of one signal can often be compensated for by increase in another in the same stimulus situation. An example may be given of an unnaturally painted spider, which stimulates no response when running freely in the field. When it is chloroformed or killed, and mounted, so that it can be persistently manipulated with appropriate jerks close to the tested spider, it will frequently arouse a response through reinforcement. The same situation occurs when an old female is placed with a male in a small, closed container; with either contact or airborne chemical stimuli reinforced, the male frequently displays, although he would not be sufficiently stimulated to do so in the field.

Also as in other groups, maximal stimulus is needed to arouse minimal response in

spiders of weak internal drive, while spiders of strong internal drive give a normal response to a minimal stimulus, often responding to fraction of the usual configuration. As previously noted, summation readily occurs in this family.

Highly stimulated spiders in unnatural test situations, and spiders in states of moderate and low internal drive, frequently confuse threat and courtship reactions and behave inappropriately in other respects. These actions, which may often be classed as typical displacement behavior, give provocative clues to evolution; they will be considered later.

Wholly aside from test situations, however, the reaction of spiders in the field is to complex, closely integrated, mutually dependent configurational stimuli. Although there are no simple, lock-and-key arrangements, the more the stimulus situation departs from the normal, the less likely is it to release display.

In an over-all view, salticid display presents a complex combination of rigid and fluid aspects. It is true that display patterns are wholly fixed and instinctive. Learning plays no discernible part in this field of activity, since males reared in solitude perform either courtship or threat to perfection on their first attempt. Again, there is no evidence that imprinting ever takes place. Finally, when two males of different species display, each maintains rigidly his own dis-

TABLE VII.
Generalized Course of Display in Salticids.

Male.	Female.
Becomes aware of ♀; starts display, Stage I. (<i>Minimal releaser</i> : several sight factors; airborne chemical stimuli also usually involved).	Retreats, or watches ♂, usually in braced, high position, often vibrating palps. Rarely attacks. (<i>Minimal releaser and director</i> : several sight factors).
Approaches, in zigzags, or follows (if female retreats), continuing or resuming display. (<i>Minimal releaser and director</i> : above sight factors, plus type of female motion or lack of it). Special ♀ signs, such as vibrating palps and light abdominal spots probably have directive value.	
Speeds up display tempo. (<i>Releasers and directors</i> : reduced motion of female, plus chemical stimuli. Self-stimulation is doubtless also a factor).	Becomes completely attentive; sometimes gives weak reciprocal display. (<i>Minimal releaser</i> : summative effect of display motions).
Enters Stage II. (<i>Releasers</i> : primarily, proximity of female; also involved, usually, her lack of motion, low position, and, doubtless, reinforced chemical stimuli). Copulation follows unless female withdraws. (<i>Director</i> : sometimes a pale abdominal cross-bar).	Ceases motion and, usually, crouches low, legs drawn in.

play pattern; no temporary modifications were ever seen to occur; by contrast, imitative behavior is frequent in vertebrates, as in the cormorants which altered their flight pattern to match that of their pelican companions (Beebe, 1938, p. 106).

Nevertheless, in working with living salticids, both their own individuality and the dynamic, unfinished, untidiness of display mechanisms are constantly apparent. A given spider's behavior is scarcely more predictable than that of a single electron. It depends, at any given instant, on great numbers of factors, external and internal, all in various stages of evolution, all related, and all themselves in a state of constant change. Wasted energy, abortive displays and lost opportunities are the rule. Altogether, the lumbering, complex, display mechanisms do not appear efficient. The most that can be said of them is that they work adequately enough, often enough, to ensure the perpetuation of the species. In the end, however, all the billions of salticids, hopping at this moment about the globe, are lively proof of their success.

VII. BEHAVIOR RELATED TO DISPLAY.

The basic similarity of behavior trends in all higher organisms—whether invertebrate or vertebrate—becomes increasingly clear. Not only do animals agree in the obvious, basic activities essential to all life, but they prove also to be surprisingly similar, among the end forms, in the more complex aspects of behavior. It has long been recognized that when vision becomes the dominant sense, elaborate, visually dominated courtships often evolve; the principle applies in certain cephalopods, crabs, spiders and insects as well as among fish, lizards and birds. The importance and frequent distinctness of threat display in salticids has been emphasized throughout this paper, and is in accord with results of recent behavior studies of birds and other vertebrates. Similarly, it is increasingly evident that dominance hierarchies, social and territorial behavior and displacement activities very often occur in higher invertebrates, though usually in primitive form. Although these latter aspects were studied only incidentally in the Rancho Grande salticids, the following observations appear to be worth recording.

A. DISPLACEMENT OR SUBSTITUTE BEHAVIOR. Experimental work sometimes drew inappropriate responses which correspond closely with typical displacement behavior in birds and other groups. When a stimulus configuration, while partly effective, was yet too exaggerated or incomplete to draw an appropriate display, the spider either retreated, attacked or by-passed the stimulus, exchanged threat for courtship and courtship for threat or regressed to a more primitive level of display behavior. It is interesting, however, that at no time were the substitute

activities wholly outside the sexual field. That is, never did the spider stalk an insect, pick up a discarded fly, spin a retreat, or even resort to grooming—that substitute action so common throughout much of the vertebrate world.

This restriction of displacement behavior appears to be an example of the rigidity typical of higher invertebrates. The compartments of life are kept distinct even in the midst of "mental" confusion, shock or frustration. With such restrictions, a girl would not reach for her lipstick when frightened by a bomb, nor a startled bird fidget with the makings of an off-season nest. To lapse into anthropomorphism, a salticid, when his prey escapes, never picks a fight with another male, nor does a rejected suitor gorge on extra flies.

B. DOMINANCE. In salticids, little hint has yet been found of long-term dominance relationships. Day to day variation, as shown in energetic courtship and threat or apathy and retreat, is on a rhythmic, physiological basis. It is true that some males never develop as high tone levels as others, the peaks of their rhythm curves being lower; in this sense dominance may be said to occur. I have never found, however, that rank is altered by a series of successes or failures in threat display or in actual combat. In primitive groups, where inter-male combat does not ordinarily exist, nothing approaching dominance relations was seen (apart from the usual physiological fluctuations, which determined the degree of courtship activity at a given time). In groups of young and old spiders placed together in a cage, the small ones invariably showed a healthy wariness of the large individuals; in view of the carnivorous character of the spiders, however, this behavior certainly needs no more explanation than the obvious one of self-defense. (See also p. 203).

C. SOCIALITY. *C. xanthopa* was one species in which traces of social behavior occurred. Along the leaf-strewn Water Trail, the richest habitat for this species, three to ten individuals were often found fairly close together. These groups included individuals of various ages and both sexes. They occurred in an area of about a square yard or two, divided by 10 to 20 feet from the next group. There was absolutely no discernible difference in the ecological characteristics of the populous and barren stretches, and indeed they shifted back and forth in quite irregular fashion over a period of weeks. Intra-specific relations within a group appeared purely casual. Abortive courtships and threat displays were brief and frequent. There was a high degree of mutual toleration, but, except for sexual situations, no inter-individual associations. It is noteworthy that quite small individuals, measuring less than half the size of the adults, were included in these groups, and apparently not stalked as food. Often their attention was attracted by the

displays of nearby adults, and at times they appeared to watch attentively these encounters of their elders, although they took no part whatever. The same behavior was noted in non-displaying adult males, and in fat females, obviously soon to lay eggs. On other occasions, these non-displaying members of the group simply continued their previous occupations, paying no attention to the others; they either maintained hour-long lookouts from the top of a projecting twig, stalked prey with indifferent success, hopped slowly along a meandering course, or simply moved occasionally out of the shifting sunlight.

An example of more advanced sociality was found in *Semorina megachelyne*. A large silk shelter was taken containing a group of 14 individuals of various instars, including several adult males and females. The young ranged from the first through the preadult stadia, the youngest being sheltered in a subcocoon. The morphologically primitive position of *Semorina*, compared with the advanced niche of *Corythalia*, indicates that sociality is not dependent in this group on phylogenetic specialization. Comparable dissociation of these two factors is found in other groups, including non-salticid spiders, lepidopteran caterpillars and birds.

It is probably significant that in neither of these examples of incipient sociality, *Semorina* and *Corythalia*, is inter-male fighting developed; in the one case the males follow the primitive pattern of mutual disregard; in the other, combat has been sublimated into threat. Never have I seen any signs of group formation in the more pugnacious genera.

D. TERRITORY. A territorial concept almost certainly exists in salticids, but work has scarcely been started on this angle. In captivity, all salticids generally returned to the same shelter, if they made one, night after night, even occupying it through several successive molts, so long as it was undisturbed. It seems probable that such a practice occurs also in the field. It is certainly a likely beginning for a concept of territory, or at least of home range. When siblings of *Phiale*, *Corythalia* and *Eustiromastix* young were reared in groups of three or four through the early molts, they not only got on peacefully at all times, but each always—on the many occasions when they were observed with this point in mind—returned to his own shelter at night and during ecdysis. One group of three *Phiale dybowskii* was reared to adulthood in this fashion. Individual variations in size and pattern made the identification of individuals easy after the second instar.

Cannibalism is exceedingly rare in this family, and when it occurs it is only under extreme provocation of hunger or gross size disparity. In the few cases where females killed the males, they were eaten only twice, both in *Eustiromastix*. After inter-male

battles, the losers were never eaten, even when they had been disabled or killed.

On the other hand, there is no evidence yet that salticids actually defend a territory, even in the case of adult males. I am quite sure that the young at least do not have one, although the concept of home range seems applicable, at least in *C. xanthopa*. This term, as defined by Burt (1943), signifies that wandering of individuals is limited, although the area is shared at least tolerantly with others of the same species.

It is notable that although in the orb-weavers the adult males wander, in *Corythalia xanthopa*—the only species where field marking has been initiated—the females did the roaming. One female, recaptured after 34 days, was taken 186 feet from her original location, while several marked males were seen repeatedly during a single month within two feet of their original positions. A similar situation exists in fiddler crabs (Crane, 1941, p. 160) and, of course in vertebrates (e.g., Evans, 1938; Lack, 1943).

When a strong adult male *xanthopa* in A-tone was dropped close to a wild male who had hitherto been undisturbed, the usual threat display took place, but I saw no sign whatever that the strange male was usually driven off by the previous "tenant," or showed much perturbation. The response was tested more than ten times. This result is in strong contrast to the behavior of an orb-weaver dropped into a strange web. The retreat of a protagonist seemed to depend only on his physiological condition, rather than on any general reduced pugnacity or sense of security when out of his own range.

The other intermediate and hopper group salticids were in general strongly individualistic; two or more adult males were rarely shaken from the same herb or bush, and it may be that in these cases definite territories are maintained and defended. On the other hand, possession or invasion of a territory is certainly not a prerequisite to display, indeed by the prompt reactions of A-tone males dropped simultaneously on a strange table-top. Altogether, development of territoriality appears to be a very primitive level.

VIII. FUNCTIONS OF DISPLAY.

A. COURTSHIP.

The theories concerning the functions of courtship display in spiders have already been reviewed (p. 170). The conclusions resulting from the Rancho Grande studies are as follows: First, courtship display is unquestionably a necessary preliminary to mating, and not merely an outlet of excess energy for males in breeding condition, as suggested by Wallace and Berland. Second, sexual selection in the original sense used by Darwin and the Peckhams is not operative. Third, as Savory points out, the concept of recognition as distinct from, and preceding stimulation, does not appear to be necessary.

Indeed, any concept of preliminary recognition seems to be highly questionable, even when recognition is regarded merely as a kind of realization by the female that a potential meal is not at hand. Rather, it seems probable that it is through her sexual stimulation that her feeding impulses are inhibited. In this view, the two processes are merely different results of the same psycho-physical sequence, developing simultaneously and governed by the same stimulus configuration. To distinguish between recognition and stimulation in salticids seems as difficult as to differentiate temporally between human fear and loss of appetite when a charging bull interrupts a picnic: in each case two emotions, or at least sensations, are involved, one positive, one negative, and bearing an inverse ratio to each other.

As modern observers agree (e.g., Savory, 1928), the stimulation of the female is probably physically as well as psychologically necessary, since alterations appear to be made in the epigynum itself in order to permit the insertion of the palps.

The following summary may now be given of the functions of salticid courtship, as they appear from the Rancho Grande studies. It is, in essence, a selection and elaboration of certain earlier views, especially those of Savory and Bristowe. Most of it applies to animal courtship in general. The term "courtship," as used throughout this paper, includes the responses of the female as well as those of the male, and the production as well as the reception of sign stimuli.

The primary functions of courtship in salticids, then, may be expressed as follows: Courtship serves to bring to mutual attention and proximity two individuals of the same species, opposite sex and requisite physiological condition; simultaneously it inhibits their usual predator and self-protective behavior while stimulating each sex so that copulation may take place. These are the primary functions, of obvious and immediate biological use in the life of the individual.

Secondary functions, which may be considered by-products of the above, are of importance in the life of the species. First, sexual selection operates in the sense that males of chronically mediocre drive—among which are doubtless individuals of genetic weakness—do not use sufficient energy and persistence to win acceptance by females. Second, courtship display acts as an effective isolating mechanism between similar but well-evolved species: Since crosses would, judging by analogy in other animals, often prove sterile or unfit, the progressively exclusive action of individual courtships must prevent considerable germ cell wastage. The effectiveness of display as an isolating mechanism will be discussed in the section on evolutionary aspects.

B. THREAT.

Earlier views on the cause and function of fighting and/or threat display among salticid males were summarized on p. 170. To recapitulate briefly the two extreme hypotheses, the Peckhams accepted the unmodified Darwinian premise that inter-male fighting was brought on by rivalry; as a result, the females mated with the strongest or bravest or boldest, either through male conquest or female choice. Bristowe, on the other hand, holds that inter-male display occurs when males temporarily mistake each other for females; actual fighting sometimes results through frustration.

Neither of these views explains satisfactorily the condition in many salticids, including *Corythalia*. Against the Darwinian hypothesis stand the facts that the winner of a combat does not necessarily get the adjacent female, females certainly do not necessarily "choose" the winners, the fights are usually no more than slight psychological sparring matches, at which females may or may not be present, and the winners—that is, the more aggressive—are certainly not necessarily the largest or brightest of the males. I have seen a six or seven-legged male, of small size, prevail over larger individuals on successive days; almost certainly the epigamic physiological rhythm was involved; but some individuals appear regularly to be more dominant (in their A-tone periods) than others of the same threshold. (See also p. 202). In the species Bristowe observed in England, courtship and threat display were identical. For such as these, his hypotheses of mistaken identity is completely satisfactory. According to the hypothesis of phylogeny presented in the present paper, these represent an intermediate phase of development of dependence on sight practically superseding dependence on chemical stimuli. In genera taken to represent more primitive forms, such as *Menemerus*, *Ashtabula* and *Semorina*, all far more dependent on chemical stimuli, threat display is apparently nonexistent and mirror display never occurs (except in self-stimulation in *Menemerus*, p. 182). Finally, in the most visually dependent genera, the hopper groups, of which the best ultimate examples are in *Corythalia*, threat and courtship are completely divorced. In *C. xanthopa* such an extreme is reached that different appendages are used in the two kinds of display, and true fighting has never been known to occur except under extremes of crowded, hot laboratory conditions. It seems that here there is a sublimation of aggressive impulses, as in many birds, and that a type of mutual stimulation takes place which is useful in maintaining or increasing sexual tone.

Just as in courtship display, it must be kept always in mind that male spiders are potentially dangerous to one another, both because of their carnivorous habits and their poison glands; this is rarely the case in other